

NY+LON Streets Collection



New York.



London.

A high-angle, perspective shot of a cobblestone path that recedes into the distance, creating a strong sense of depth. The stones are grey and rectangular, laid in a regular grid pattern. The path is centered and leads the eye towards a vanishing point at the top of the frame. The lighting is even, highlighting the texture of the stones.

**New York. London.
Exploration.**

NY+LON Streets

Taking its name from carpet's core material and its inspiration from two of the world's iconic cities, NY+LON Streets is a playful carpet collection that encourages a new perspective on urban exploration.



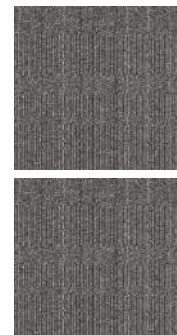
Carpet Tile Dover Street
Colour Steel Dot
Carpet Tile Mercer Street
Colour Steel Circle **Installed** Monolithic



Carpet Tile Broome Street
Colour Yellow Glass
Carpet Tile Wheler Street
Colour Iron Square **Installed** Monolithic



Carpet Tile Wheler Street
Colour Slate Square **Installed** Monolithic



Carpet Tile Old Street
Colour Steel Grid Installed Monolithic



Carpet Tile Dover Street
Colour Concrete Dot **Installed** Monolithic



Carpet Tile Reade Street
Colour Iron Plate **Installed** Monolithic



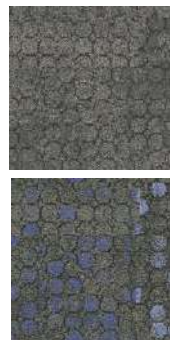
Carpet Tile Mercer Street
Colour Brown Circle Installed Monolithic



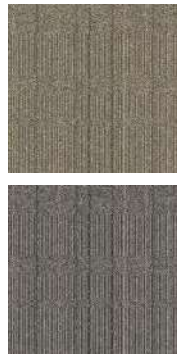
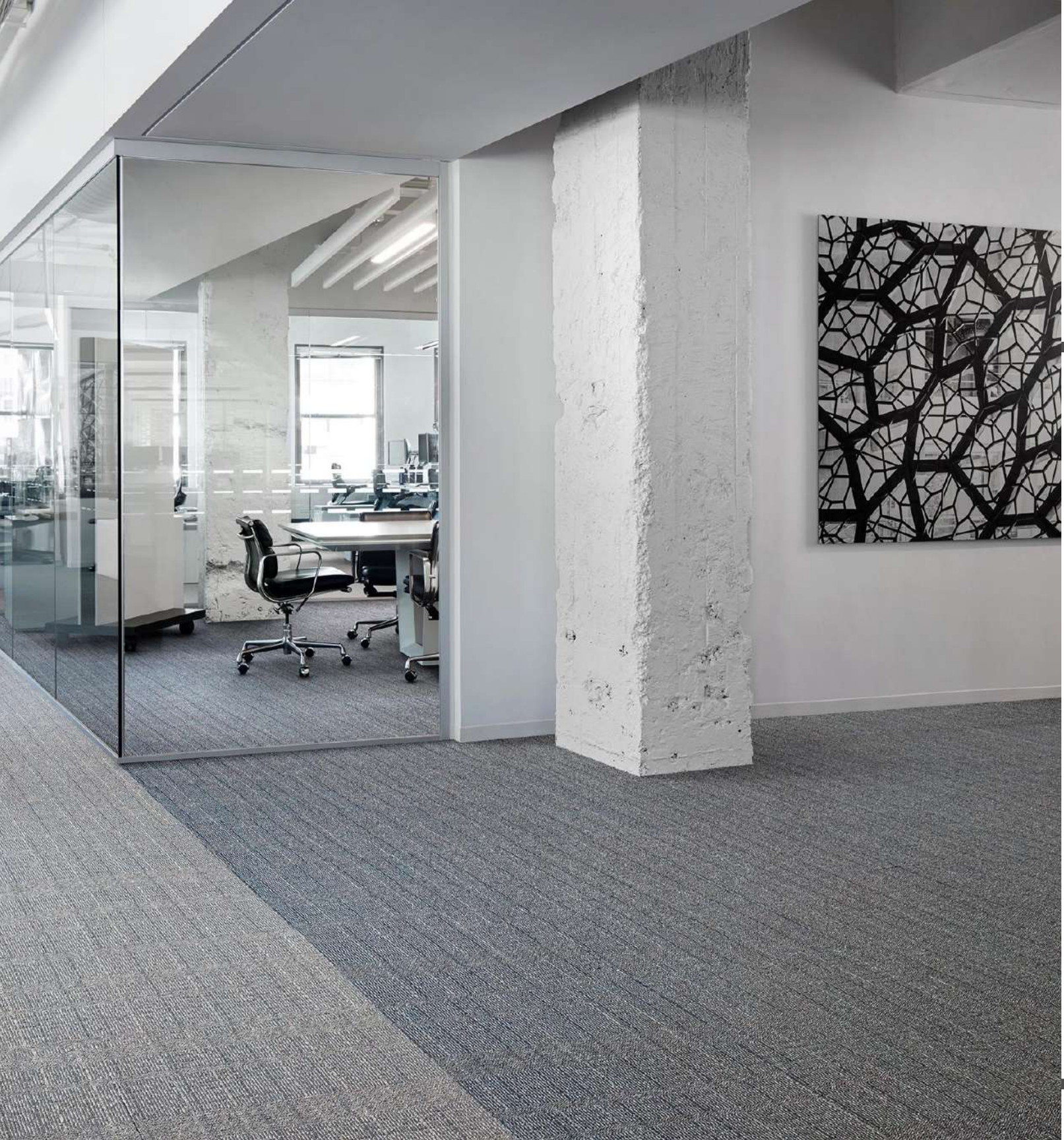
Carpet Tile Broome Street
Colour Black Glass Installed Monolithic

LVT Level Set™ | Textured Stones
Colour Medium Concrete Installed Monolithic





Carpet Tile Mercer Street
Colour Slate Circle
Carpet Tile Broome Street
Colour Blue Glass **Installed** Pattern By Tile



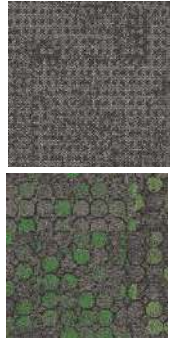
Carpet Tile Old Street
Colour Concrete Grid, Metal Grid **Installed** Monolithic



Carpet Tile Old Street
Colour Iron Grid
Carpet Tile Broome Street
Colour Turquoise Glass **Installed** Monolithic



Carpet Tile Reade Street
Colour Metal Plate
Carpet Tile Dover Street
Colour Metal Dot **Installed** Monolithic



Carpet Tile Wheler Street
Colour Steel Square
Carpet Tile Broome Street
Colour Green Glass **Installed** Pattern By Tile

Carbon Neutral Floors™



Old Street



9442-001-000 CONCRETE GRID



9442-002-000 BROWN GRID



9442-003-000 IRON GRID



9442-004-000 STEEL GRID



9442-005-000 METAL GRID



9442-006-000 GRAPHITE GRID



9442-007-000 SLATE GRID



9442-008-000 BLACK GRID

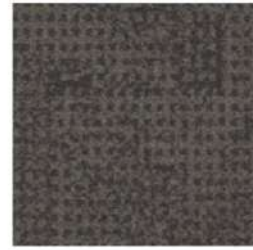
Wheler Street



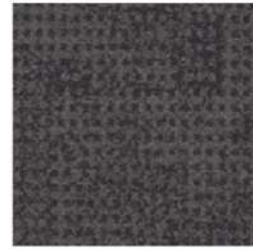
9438-001-000 CONCRETE SQUARE



9438-002-000 BROWN SQUARE



9438-003-000 IRON SQUARE



9438-004-000 STEEL SQUARE



9438-005-000 METAL SQUARE



9438-006-000 GRAPHITE SQUARE

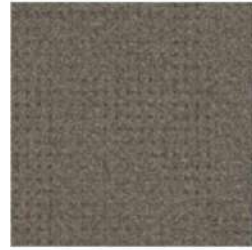


9438-007-000 SLATE SQUARE



9438-008-000 BLACK SQUARE

Dover Street



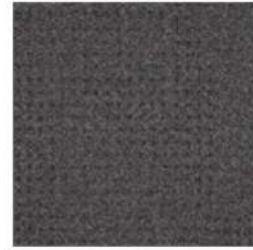
9444-001-000 CONCRETE DOT



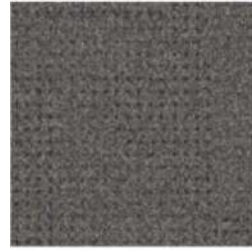
9444-002-000 BROWN DOT



9444-003-000 IRON DOT



9444-004-000 STEEL DOT



9444-005-000 METAL DOT



9444-006-000 GRAPHITE DOT



9444-007-000 SLATE DOT



9444-008-000 BLACK DOT

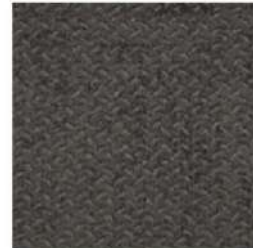
Reade Street



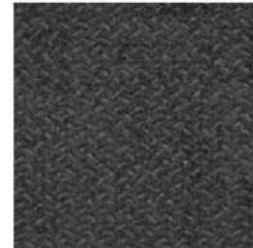
9446-001-000 CONCRETE PLATE



9446-002-000 BROWN PLATE



9446-003-000 IRON PLATE



9446-004-000 STEEL PLATE



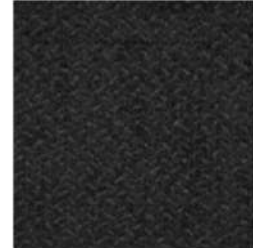
9446-005-000 METAL PLATE



9446-006-000 GRAPHITE PLATE



9446-007-000 SLATE PLATE

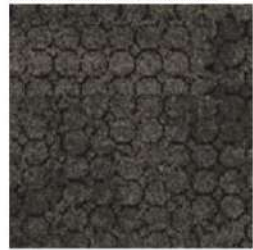


9446-008-000 BLACK PLATE

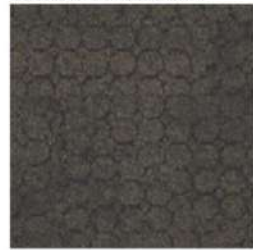
Mercer Street



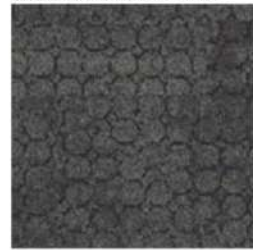
9447-001-000 CONCRETE CIRCLE



9447-002-000 BROWN CIRCLE



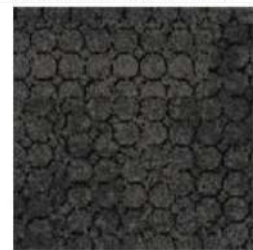
9447-003-000 IRON CIRCLE



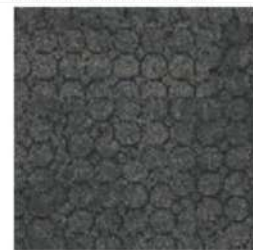
9447-004-000 STEEL CIRCLE



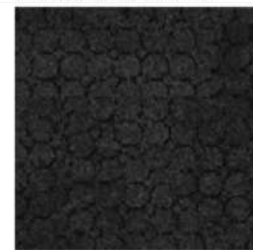
9447-005-000 METAL CIRCLE



9447-006-000 GRAPHITE CIRCLE

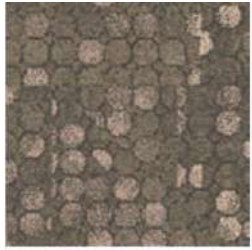


9447-007-000 SLATE CIRCLE

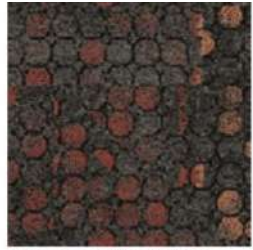


9447-008-000 BLACK CIRCLE

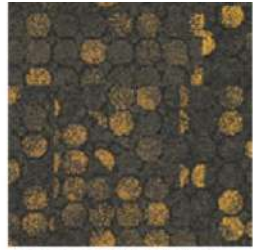
Broome Street



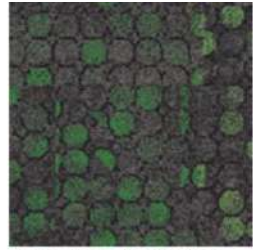
9440-001-000 CORAL GLASS



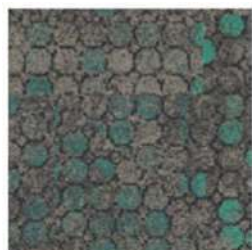
9440-002-000 BRICK GLASS



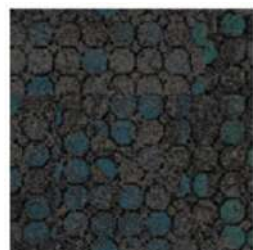
9440-003-000 YELLOW GLASS



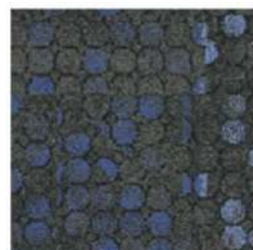
9440-004-000 GREEN GLASS



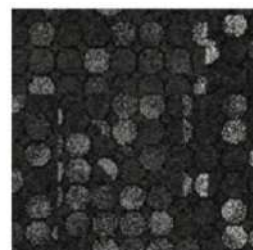
9440-005-000 TURQUOISE GLASS



9440-006-000 TEAL GLASS



9440-007-000 BLUE GLASS



9440-008-000 BLACK GLASS

Specifications

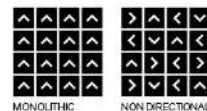
Old Street™

Style Code	9442
Product Construction	Tufted Textured Loop
Yarn System	100% Solution Dyed Nylon
Machine Gauge	Tapestry
Pile Thickness	2.5mm (± 0.5mm)
Total Thickness	5.5mm (± 0.5mm)
Tile Size	50x50cm
Area of Use	Commercial - Heavy Use
Lifetime Antimicrobial Soil/Stain Protection	Intersept® Protekt ² ®
Installation Methods	Quarter Turn, Ashlar, Monolithic



Wheler Street™

Style Code	9438
Product Construction	Tufted Textured Loop
Yarn System	100% Solution Dyed Nylon
Machine Gauge	Tapestry
Pile Thickness	2.5mm (± 0.5mm)
Total Thickness	6.0mm (± 0.5mm)
Tile Size	50x50cm
Area of Use	Commercial - Heavy Use
Lifetime Antimicrobial Soil/Stain Protection	Intersept® Protekt ² ®
Installation Methods	Monolithic, Non Directional



Dover Street™

Style Code	9444
Product Construction	Tufted Textured Loop
Yarn System	100% Solution Dyed Nylon
Machine Gauge	Tapestry
Pile Thickness	2.5mm (± 0.5mm)
Total Thickness	6.0mm (± 0.5mm)
Tile Size	50x50cm
Area of Use	Commercial - Heavy Use
Lifetime Antimicrobial Soil/Stain Protection	Intersept® Protekt ² ®
Installation Methods	Monolithic



Reade Street™

Style Code	9446
Product Construction	Tufted Textured Loop
Yarn System	100% Solution Dyed Nylon
Machine Gauge	Tapestry
Pile Thickness	2.5mm (± 0.5mm)
Total Thickness	6.5mm (± 0.5mm)
Tile Size	50x50cm
Area of Use	Commercial - Heavy Use
Lifetime Antimicrobial Soil/Stain Protection	Intersept® Protekt ² ®
Installation Methods	Monolithic



Mercer Street™

Style Code	9447
Product Construction	Tufted Textured Loop
Yarn System	100% Solution Dyed Nylon
Machine Gauge	Tapestry
Pile Thickness	2.5mm (± 0.5mm)
Total Thickness	6.0mm (± 0.5mm)
Tile Size	50x50cm
Area of Use	Commercial - Heavy Use
Lifetime Antimicrobial Soil/Stain Protection	Intersept® Protekt ² ®
Installation Methods	Monolithic



Broome Street™

Style Code	9440
Product Construction	Tufted Textured Loop
Yarn System	100% Solution Dyed Nylon
Machine Gauge	Tapestry
Pile Thickness	2.5mm (± 0.5mm)
Total Thickness	6.5mm (± 0.5mm)
Tile Size	50x50cm
Area of Use	Commercial - Heavy Use
Lifetime Antimicrobial Soil/Stain Protection	Intersept® Protekt ² ®
Installation Methods	Non Directional, Monolithic

