

ISO 9001:2000 Certified Company

ISO 9001:2000

ISO 9001:2000 Certified Company

ISO 9001:2000 Certified Company

ISO 9001:2000 Certified Company

ISO 9001:2000 Certified Company

ISO 9001:2000 Certified Company

ISO 9001:2000 Certified Company

ISO 9001:2000 Certified Company



Roller Blinds

Plain



ISO 9001:2000 Certified Company

ISO 9001:2000 Certified Company

ISO 9001:2000 Certified Company

ISO 9001:2000 Certified Company

ISO 9001:2000 Certified Company

ISO 9001:2000 Certified

ISO 9001:2000 Certified Company

ISO 9001:2000 Certified Company



ISO 9001:2000 Certified Company

ISO 9001:2000 Certified



Carlos Blackout



Holder for Twin Blinds

Roller Blinds





◀ CB 276

◀ CB 277

◀ CB 278

◀ CB 279

◀ CB 280

◀ CB 281



Carlos Blackout

Technical Detail

Composition	: 100% Polyester
Black out rate	: 100%
Weight	: 335 g/m ² (±5%)
Fabric Thickness	: 0.53 MM (± 0.05)
Available Width	: 2.40 Mtr.
Hanging Properties:	Excellent
Tearing Strength	: Very high
Coating	: Acrylic Coating resistant to Cracking & Fraying
Cleaning	: Conditionally cleanable with a damp Cloth

Note:

The fabric has been produced for using the width horizontally, if you want to use width vertically then we recommend suitability test.

ISO 9001:2000 Certified Company

ISO 9001:2000 Certified Company

ISO 9001:2000 Certified Company

ISO 9001:2000 Certified Company

ISO 9001:2000 Certified Company

ISO 9001:2000 Certified Company

ISO 9001:2000 Certified Company



ISO 9001:2000 Certified Company

ISO 9001:2000 Certified Company



Impulse Blackout



Roller Blinds





◀ IB 326

◀ IB 327

◀ IB 328

◀ IB 329

◀ IB 330



Impulse Blackout

Technical Detail

Composition	: 100% Polyester
Black out rate	: 100 %
Weight	: 475 g/m ² (±5%)
Fabric Thickness	: 0.53 MM (± 0.05)
Available Width	: 2.50 Mtr.
Hanging Properties	: Excellent
Tearing Strength	: Very high
Coating	: Acrylic Coating resistant to Cracking & Fraying
Cleaning	: Conditionally cleanable with a damp Cloth

Note:
The fabric has been produced for using the width horizontally, if you want to use width vertically then we recommend suitability test.

ISO 9001:2000 Certified Company

ISO 9001:2000 Certified Company

ISO 9001:2000 Certified Company

ISO 9001:2000 Certified Company ISO 9001:2000 Certified

ISO 9001:2000 Certified Company

ISO 9001:2000 Certified Company



ISO 9001:2000 Certified Company

ISO 9001:2000 Certified Company



Lycos Translucent



Roller Blinds





◀ LT 126

◀ LT 127

◀ LT 128

◀ LT 129

◀ LT 130

◀ LT 131



Lycos Translucent

Technical Detail

Composition	: 100% Polyester
Black out rate	: 100%
Weight	: 325 g/m ² (±5%)
Fabric Thickness	: 0.58 MM (±0.05)
Available Width	: 2.40 Mtr.
Hanging Properties	: Excellent
Tearing Strength	: Very high
Coating	: Acrylic Coating resistant to Cracking & Fraying
Cleaning	: Conditionally cleanable with a damp Cloth

Note:
The fabric has been produced for using the width horizontally, if you want to use width vertically then we recommend suitability test.

ISO 9001:2000 Certified Company

ISO 9001:2000 Certified Company

ISO 9001:2000 Certified Company ISO 9001:2000 Certified Company

ISO 9001:2000 Certified

ISO 9001:2000 Certified Company

ISO 9001:2000 Certified Company



ISO 9001:2000 Certified Company

ISO 9001:2000 Certified Company

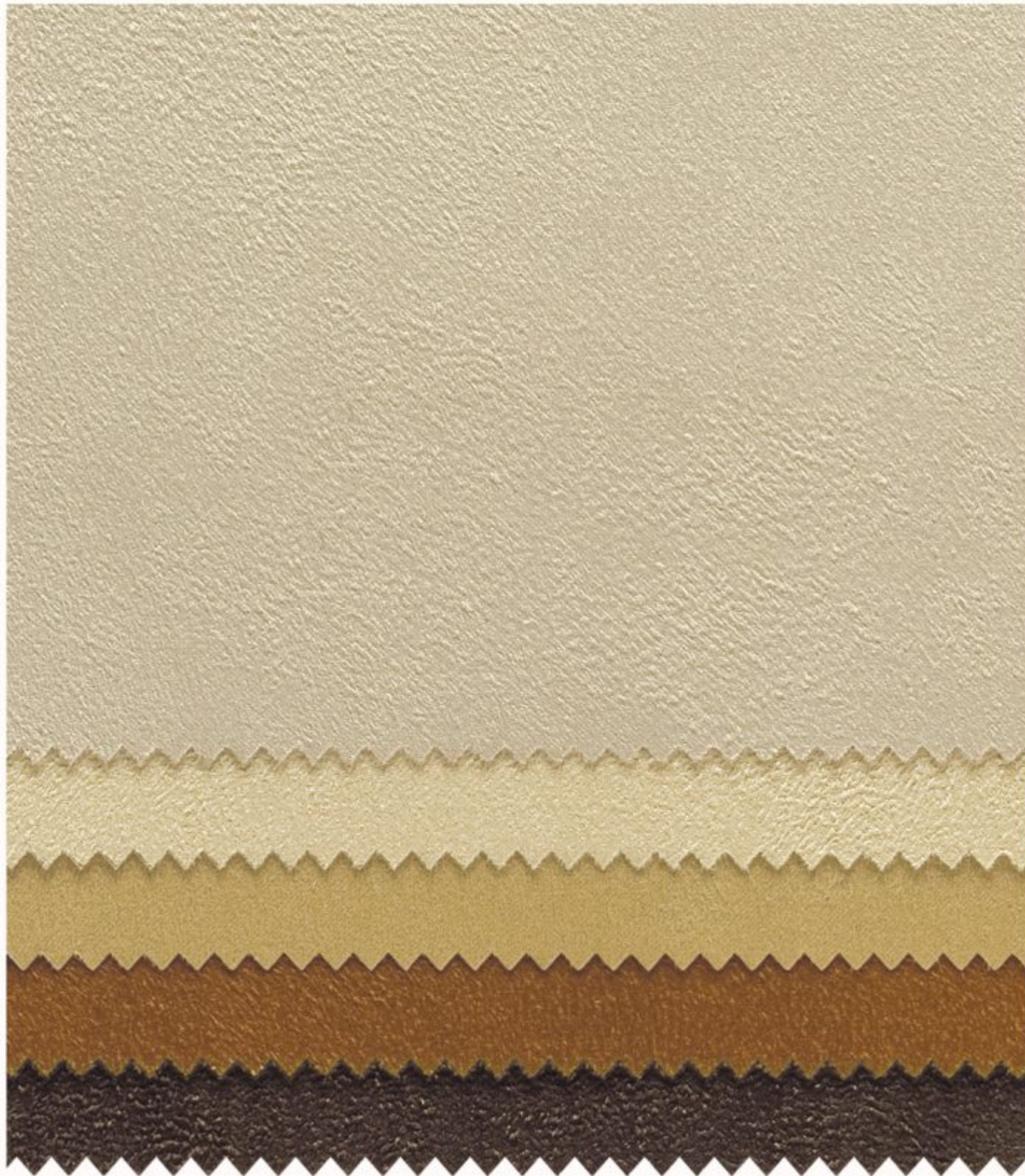


Bliss Blackout



Roller Blinds





◀ BB 76

◀ BB 77

◀ BB 78

◀ BB 79

◀ BB 80



Bliss Blackout

Technical Detail

Composition	: 100% Polyester
Black out rate	: 100%
Weight	: 350 g/m ² (±5%)
Fabric Thickness	: 0.37 MM (±0.05)
Available Width	: 2.30 Mtr.
Hanging Properties	: Excellent
Tearing Strength	: Very high
Coating	: Acrylic Coating resistant to Cracking & Fraying
Cleaning	: Conditionally cleanable with a damp Cloth

Note:

The fabric has been produced for using the width horizontally, if you want to use width vertically then we recommend suitability test.

ISO 9001:2000 Certified Company

ISO 9001:2000 Certified Company ISO 9001:2000 Certified Company

ISO 9001:2000 Certified Company

ISO 9001:2000 Certified Company

ISO 9001:2000 Certified Company



Revolve Translucent



Revolve Translucent

Technical Detail

Composition	: 100% Polyester
Weight	: 255 g/m ² (±5%)
Fabric Thickness	: 0.60 MM (±0.05)
Available Width	: 2.50 Mtr.
Hanging Properties:	Excellent
Tearing Strength	: Very high
Coating	: Acrylic Coating resistant to Cracking & Fraying
Cleaning	: Conditionally cleanable with a damp Cloth

Note:

The fabric has been produced for using the width horizontally, if you want to use width vertically then we recommend suitability test.



◀ RT 226

◀ RT 227

◀ RT 228

◀ RT 229

◀ RT 230

◀ RT 231

◀ RT 232

◀ RT 233

◀ RT 234

◀ RT 235



Roller Blinds 

ISO 9001:2000 Certified Company

ISO 9001:2000 Certified Company

ISO 9001:2000 Certified Company

ISO 9001:2000 Certified Company

ISO 9001:2000 Certified Company

ISO 9001:2000 Certified Company

ISO 9001:2000 Certified Company



ISO 9001:2000 Certified Company

ISO 9001:2000 Certified Company

Bright Translucent



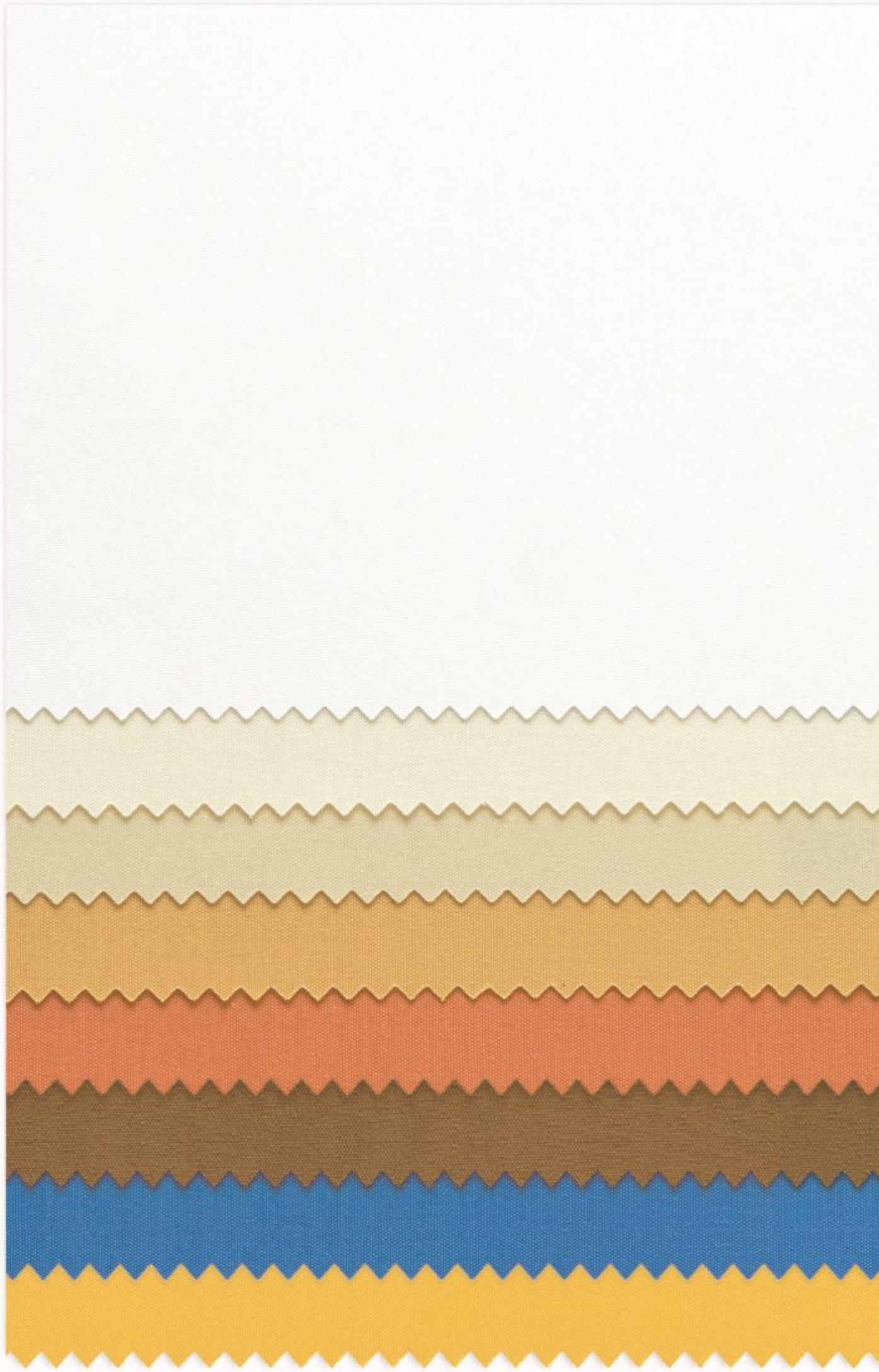
Bright Translucent

Technical Detail

Composition	: 100% Polyester
Weight	: 210 g/m ² (±5%)
Fabric Thickness	: 0.33 MM (± 0.05)
Available Width	: 2.50 Mtr.
Hanging Properties	: Excellent
Tearing Strength	: Very high
Coating	: Acrylic Coating resistant to Cracking & Fraying
Cleaning	: Conditionally cleanable with a damp Cloth

Note:

The fabric has been produced for using the width horizontally, if you want to use width vertically then we recommend suitability test.



◀ BT 100

◀ BT 101

◀ BT 102

◀ BT 103

◀ BT 104

◀ BT 109

◀ BT 106

◀ BT 107



Roller Blinds



Sun Screen



Sun Screen

Technical Detail

Shade No. →	SS - 201, SS - 205,	SS - 203 & SS - 204	SS - 202
Composition	Polyester 26%+PVC 74%	Polyester 26%+PVC 74%	Polyester 26%+PVC 74%
Openness Factor	Average 8%	Average 5%	Average 5%
UV Blockage	Average 92%	Average 95%	Average 95%
Fabric Thickness	0.50 mm	0.50 mm	0.65 mm
Weight	400 g/m ² (±5%)	405 g/m ² (±5%)	565 g/m ² (±5%)
Available Width	2.50 mtr.	2.50 mtr.	2.50 mtr.

Shade No. →	SS - 207	SS - 208 & SS - 209	SS - 210 & SS - 211
Composition	Polyester 27%+PVC 73%	Polyester 26%+PVC 74%	Polyester 26%+PVC 74%
Openness Factor	Average 5%	Average 8%	Average 5%
UV Blockage	Average 95%	Average 92%	Average 95%
Fabric Thickness	0.72 mm	0.65 mm	0.50 mm
Weight	560 g/m ² (±5%)	415 g/m ² (±5%)	390 g/m ² (±5%)
Available Width	2.50 mtr.	2.50 mtr.	2.50 mtr.

Note: The fabric has been produced for using the width horizontally, if you want to use width vertically then we recommend suitability test.



◀ SS 201

◀ SS 207

◀ SS 203

◀ SS 204

◀ SS 205

◀ SS 202

◀ SS 208

◀ SS 209

◀ SS 210

◀ SS 211



Roller Blinds



ISO 9001:2000 Certified Company

ISO 9001:2000 Certified Company

ISO 9001:2000 Certified Company ISO 9001:2000 Certified Company

ISO 9001:2000 Certified

ISO 9001:2000 Certified Company

ISO 9001:2000 Certified Company



ISO 9001:2000 Certified Company

ISO 9001:2000 Certified

Fluff Blackout



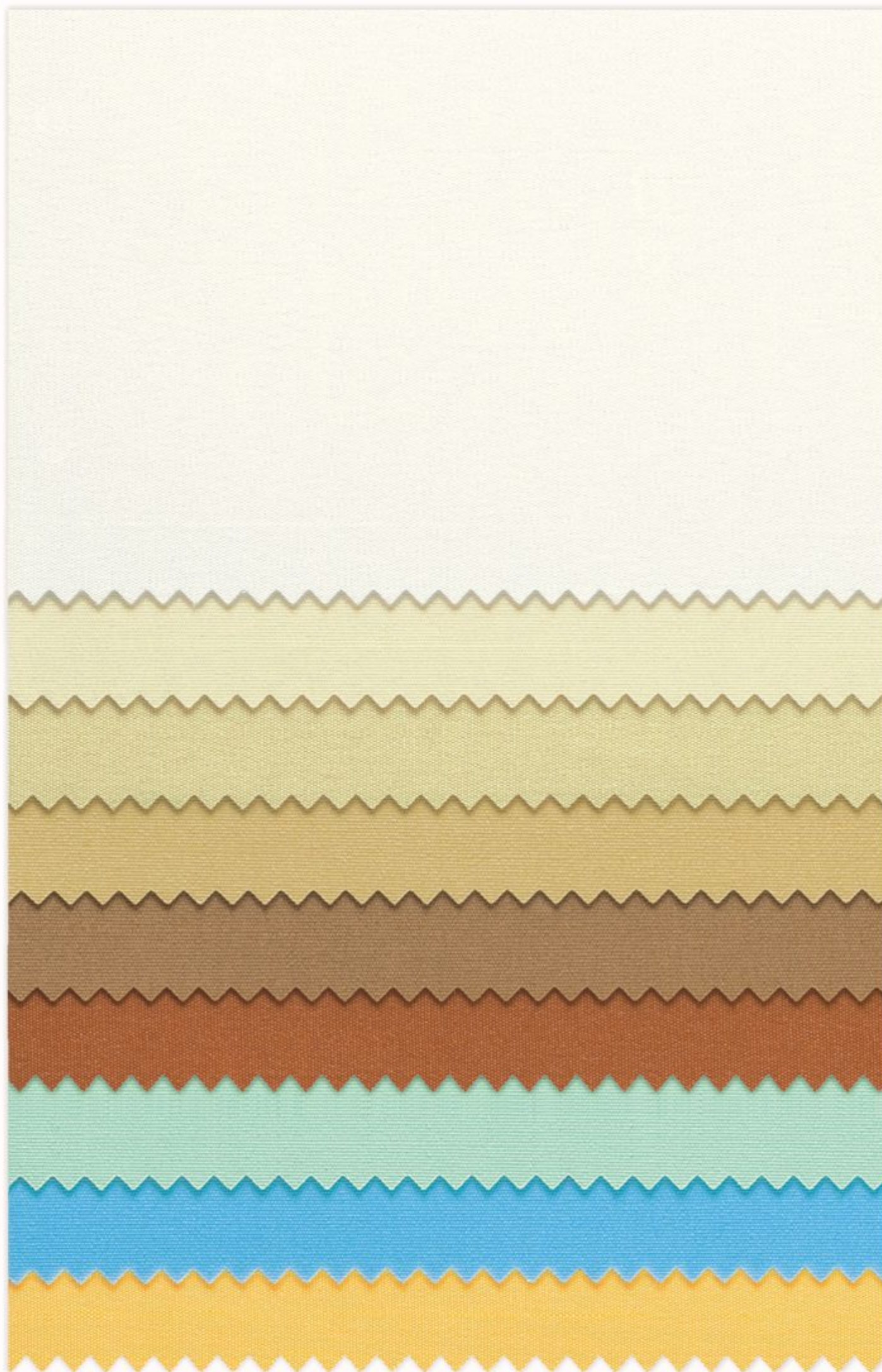
Fluff Blackout

Technical Detail

Composition	: 100% Polyester
Black out rate	: 100%
Weight	: 310 g/m ² (±5%)
Fabric Thickness	: 0.45 MM (±0.05)
Available Width	: 2.20 Mtr.
Hanging Properties	: Excellent
Tearing Strength	: Very high
Coating	: Acrylic Coating resistant to Cracking & Fraying
Cleaning	: Conditionally cleanable with a damp Cloth

Note:

The fabric has been produced for using the width horizontally, if you want to use width vertically then we recommend suitability test.



◀ FB 251

◀ FB 252

◀ FB 253

◀ FB 258

◀ FB 259

◀ FB 257

◀ FB 260

◀ FB 261

◀ FB 256



Roller Blinds 

ISO 9001:2000 Certified Company

ISO 9001:2000 Certified Company

ISO 9001:2000 Certified Company

ISO 9001:2000 Certified Company

ISO 9001:2000 Certified Company

ISO 9001:2000 Certified Company

ISO 9001:2000 Certified Company



ISO 9001:2000 Certified Company

ISO 9001:2000 Certified Company



Soft Translucent



Roller Blinds





◀ ST 161

◀ ST 162

◀ ST 163

◀ ST 164

◀ ST 165

◀ ST 166

◀ ST 167



Soft Translucent

Technical Detail

Composition	: 100% Polyester
Weight	: 155 g/m ² (±5%)
Fabric Thickness	: 0.35 MM (±0.05)
Available Width	: 2.50 Mtr.
Hanging Properties	: Excellent
Tearing Strength	: Very high
Coating	: Acrylic Coating resistant to Cracking & Fraying
Cleaning	: Conditionally cleanable with a damp Cloth

Note: The fabric has been produced for using the width horizontally, if you want to use width vertically then we recommend suitability test.

ISO 9001:2000 Certified Company

ISO 9001:2000 Certified Company

ISO 9001:2000 Certified Company

ISO 9001:2000 Certified Company

ISO 9001:2000 Certified Company

ISO 9001:2000 Certified Company

ISO 9001:2000 Certified Company



ISO 9001:2000 Certified Company

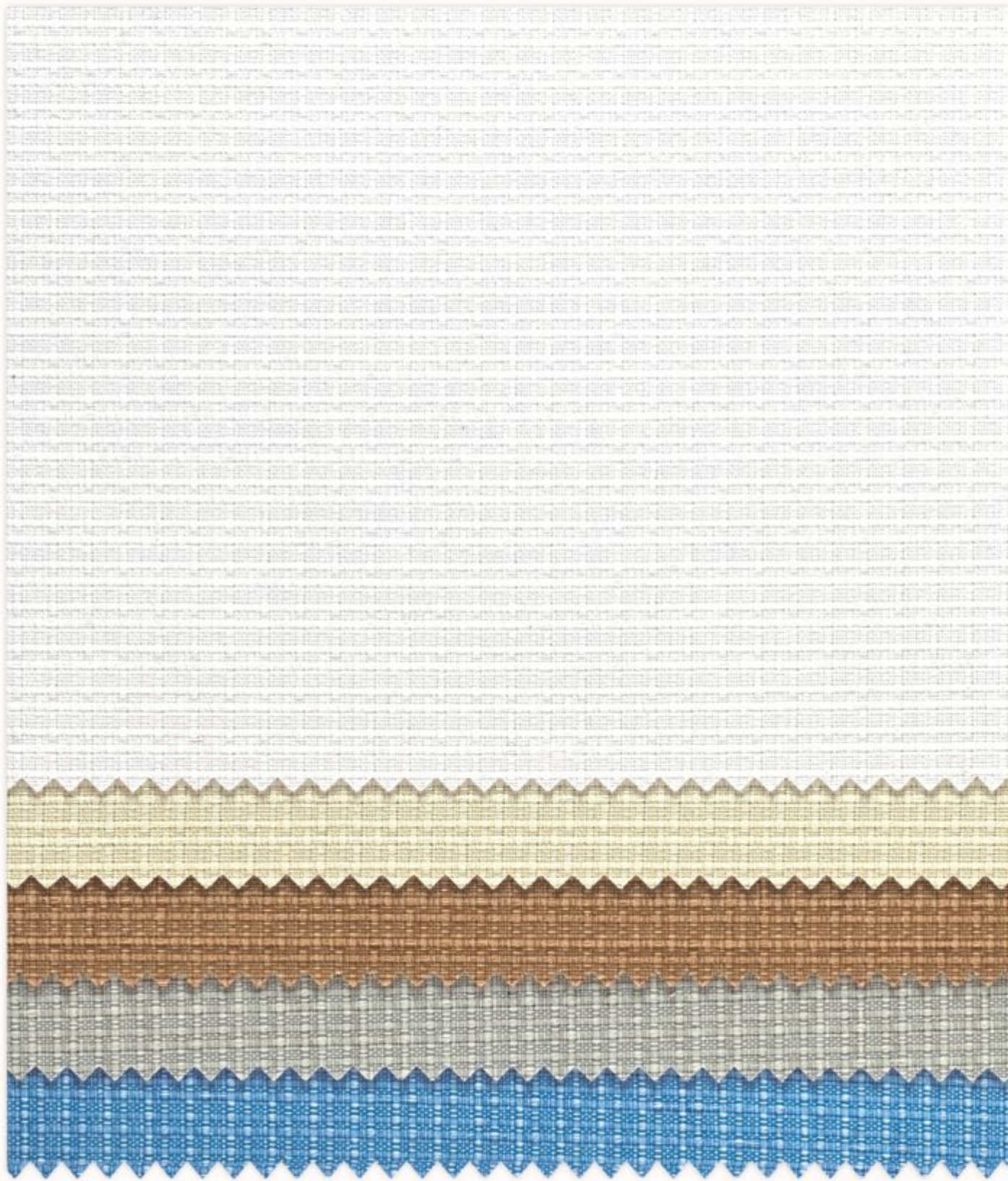


Orlando Translucent



Roller Blinds





- ◀ OT 176
- ◀ OT 177
- ◀ OT 178
- ◀ OT 179
- ◀ OT 180



Orlando Translucent

Technical Detail

Composition	: 100% Polyester
Weight	: 240 g/m ² (±5%)
Fabric Thickness	: 0.50 MM (±0.05)
Available Width	: 2.30 Mtr.
Hanging Properties	: Excellent
Tearing Strength	: Very high
Coating	: Acrylic Coating resistant to Cracking & Fraying
Cleaning	: Conditionally cleanable with a damp Cloth

Note:
The fabric has been produced for using the width horizontally, if you want to use width vertically then we recommend suitability test.

ISO 9001:2000 Certified Company

ISO 9001:2000 Certified Company

ISO 9001:2000 Certified Company

ISO 9001:2000 Certified Company

ISO 9001:2000 Certified Company

ISO 9001:2000 Certified Company

ISO 9001:2000 Certified Company



ISO 9001:2000 Certified Company

ISO 9001:2000 Certified Company

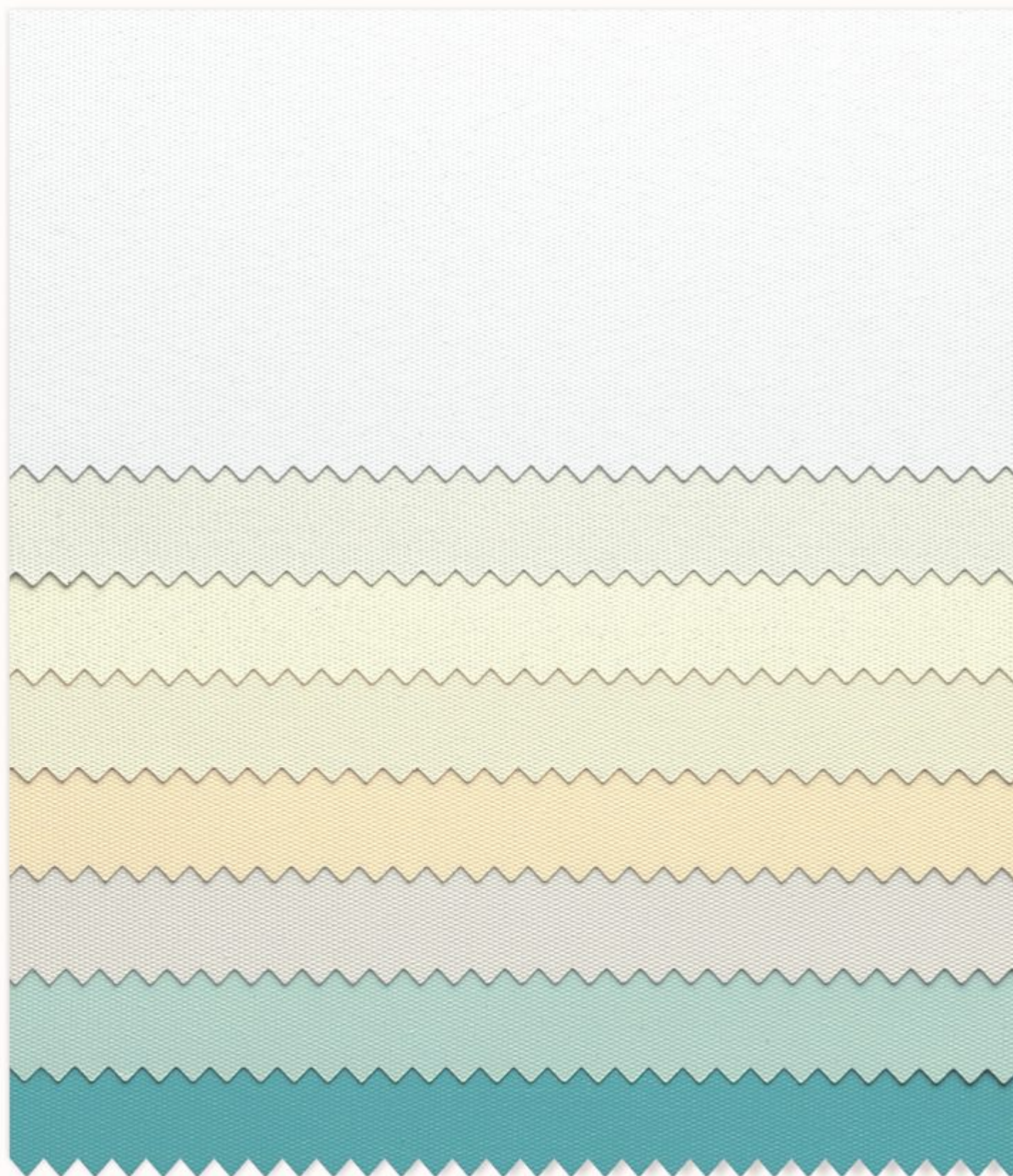


Lush Blackout



Roller Blinds





◀ LB 305

◀ LB 306

◀ LB 307

◀ LB 308

◀ LB 309

◀ LB 310

◀ LB 311

◀ LB 312



Lush Blackout

Technical Detail

Composition	: 100% Polyester
Black out rate	: 100%
Weight	: 310 g/m ² (±5%)
Fabric Thickness	: 0.33 MM (±0.05)
Available Width	: 2.40 Mtr. LB 301 to LB 304
	: 2.30 Mtr. LB 305 to LB 312
Hanging Properties	: Excellent
Tearing Strength	: Very high
Coating	: Acrylic Coating resistant to Cracking & Fraying
Cleaning	: Conditionally cleanable with a damp Cloth

Note: The fabric has been produced for using the width horizontally, if you want to use width vertically then we recommend suitability test.

ISO 9001:2000 Certified Company

ISO 9001:2000 Certified Company ISO 9001:2000 Certified Company

ISO 9001:2000 Certified Company ISO 9001:2000 Certified Company ISO 9001:2000 Certified Company

ISO 9001:2000 Certified Company



ISO 9001:2000 Certified Company

Acute Screen



Roller Blinds





◀ AS 451

◀ AS 452

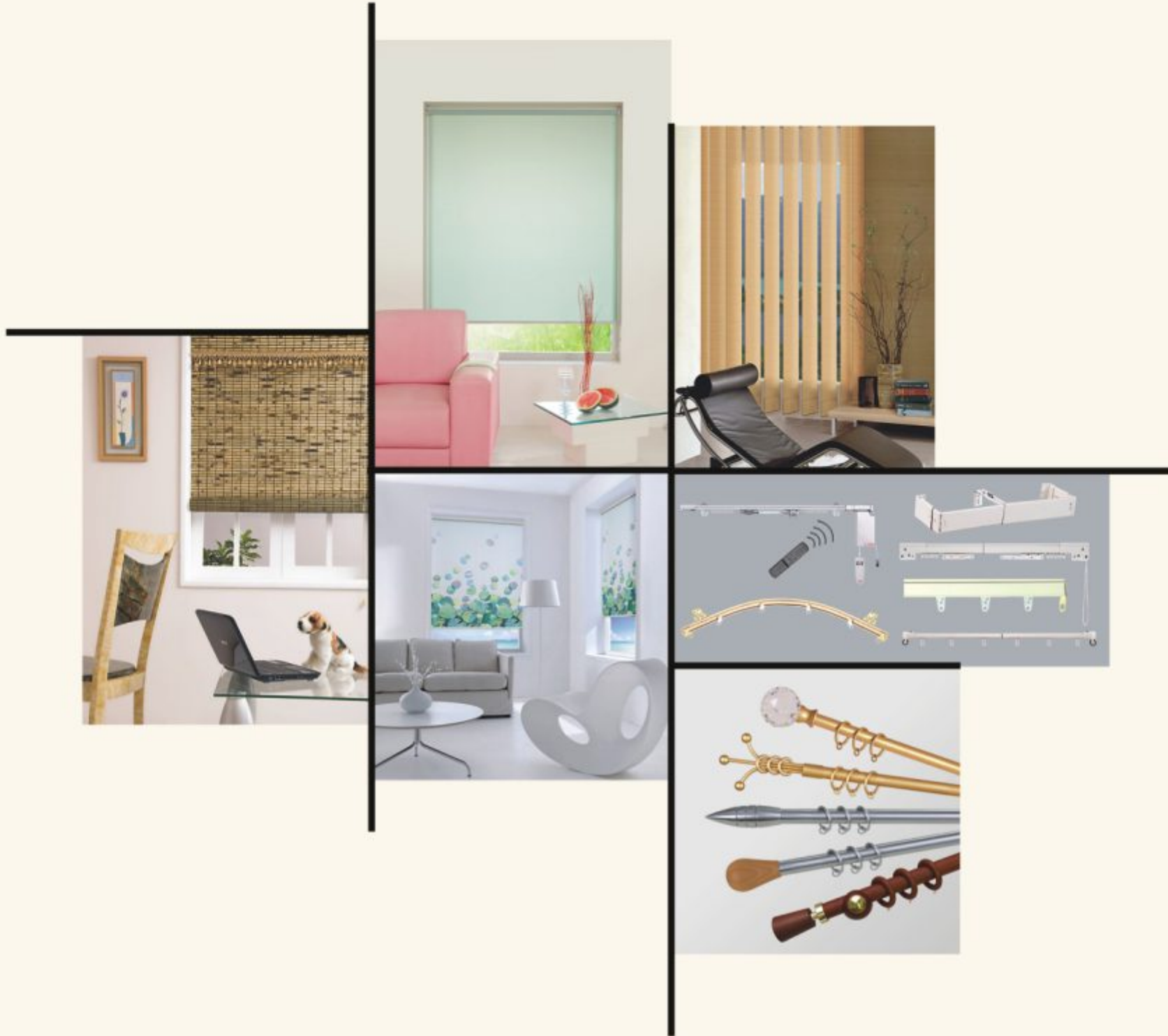


Acute Screen

Technical Detail

Composition	: 100% Polyester
Weight	: 125 g/m ² (±5%)
Fabric Thickness	: 0.30 MM (± 0.05)
Available Width	: 2.50 Mtr.
Hanging Properties	: Excellent
Tearing Strength	: Very high
Coating	: Acrylic Coating resistant to Cracking & Fraying
Cleaning	: Conditionally cleanable with a damp Cloth

Note:
The fabric has been produced for using the width horizontally, if you want to use width vertically then we recommend suitability test.



Sales Office : 604, Palm Spring Complex, Link Road, Malad (West) Mumbai - 400 064. India. Tel : +91-22-28800602, 28808282. Fax : +91-22-28810601.
 Factory : Plot No.: 211, G.I.D.C. Phase - II, Dared, Jamnagar - 361 004. Gujarat - India. Tel : +91-288-2730601, 2730602. Fax : +91-288-2730603.

e-mail : sales@marvellifestyle.com ■ web : www.marvellifestyle.com

Roller Blinds | **Vertical Blinds** | **Bamboo Blinds** | **Curtain Rods & Tracks**

www.marvellifestyle.com