

Studio Set | LVT



Studio Set™

Every project is an opportunity for fresh ideas. Enter Studio Set. Thirteen hues selected to serve as your go-to source for color in LVT. Studio Set is a spectrum of colors from super-saturated brights to ideal neutrals. Take note of the very subtle woodgrain pattern, but don't get stuck in conventional solutions. These Skinny Planks™ were meant to inspire you to design with pure color, creating unique compositions or just making a singular bold choice, like a red floor.

Combine Studio Set with Interface carpet tiles side-by-side for an integrated flooring system of hard and soft tiles in Skinny Planks and squares. Interface modular floors allow you to move from surface to surface without the need for transition strips. With similar backing systems, Interface carpet tile and LVT are installed with the unmatched ease of our glue-free TacTiles® installation system.

And, of course, we design all our products with the ability to feed our recycling program, ReEntry®. We're mindful of our commitment to continually minimize our environmental footprint.







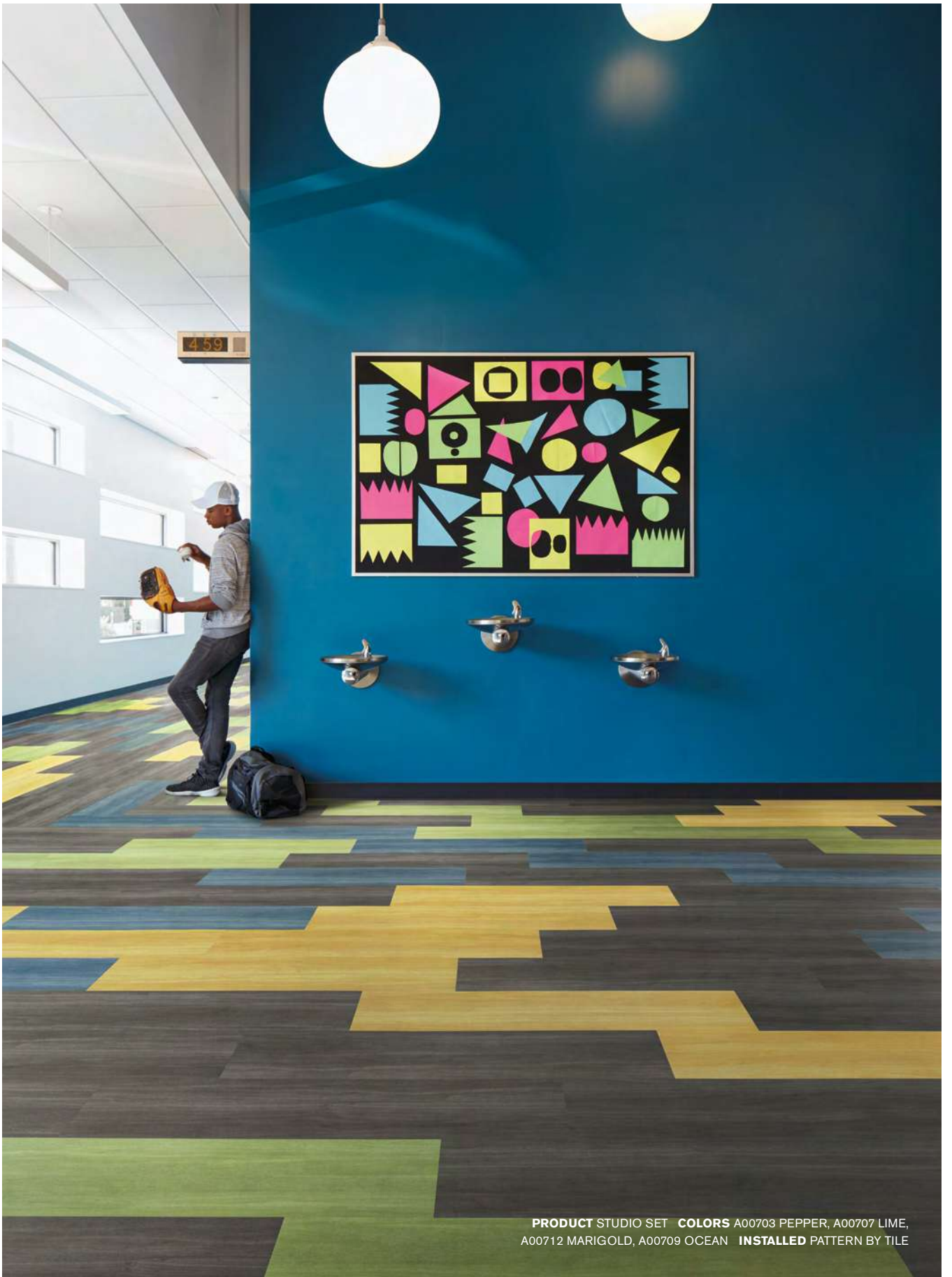
PRODUCT STUDIO SET COLORS A00703 PEPPER, A00702 PEWTER INSTALLED PATTERN BY TILE



LVT PRODUCT STUDIO SET | **COLORS** A00702 PEWTER, A00711 MANDARIN | **INSTALLED PATTERN** BY TILE
CARPET PRODUCT AERIAL™ | NEIGHBORHOOD™ BLOCKS | **COLOR** 105303 PERSIMMON/BLOCKS | **INSTALLED** ASHLAR
CARPET PRODUCT STEP REPEAT™ | SR799 | **COLOR** 104935 GRANITE | **INSTALLED** QUARTER-TURN







PRODUCT STUDIO SET **COLORS** A00703 PEPPER, A00707 LIME,
A00712 MARIGOLD, A00709 OCEAN **INSTALLED PATTERN BY TILE**

Specifications

Product Number	A007
Product Construction	High Performance Luxury Vinyl Tile
Class / ASTM F1700	Class III Printed Vinyl Plank
Wear Layer Thickness	22 mil
Total Thickness	4.5 mm
Backing Class	Commercial Grade
Finish	Ceramor® Coating
Nominal Dimensions	25cm x 1m (9.845 in x 39.38 in)
Installation Recommendation	Floating Floor with TacTiles® Glue-Free Installation System

Performance

IIC Sound Rating	(ASTM E492-09) 57 IIC
Slip Resistance	(ASTM D2047) >0.55 wet/dry, ADA Compliant
Static Load Limit	(ASTM F970) 1500 psi
Flexibility	(ASTM F137) Passes
Resistance to Heat	(ASTM F1514) Passes
Resistance to Light Radiant Flux	(ASTM F925) Passes
Smoke Density	(ASTM E648) Class I
Size & Squareness	(ASTM E662) Passes, ≤450
Thickness	(ASTM F2055) Passes, +/- 0.016 in. per linear foot
Dimensional Stability	(ASTM F386) Passes
Residual Indentation	(ASTM F2199) Passes
Resistance to Chemicals	(ASTM F1914) Passes
	(ASTM F925) Passes

Environmental

Indoor Air Quality	FloorScore®/CDPH 01350 Certified for Low-VOC Emissions
Material Composition	Free of Ortho Phthalates, Added Formaldehyde and Heavy Metal Stabilizers
Ingredients & Life Cycle Impacts	Environmental Product Declaration
Carbon Footprint	3rd Party Verified Carbon Neutral
Sustainability Assessment	NSF/ANSI 332, Meets Certification Guidelines
LEED v4	Contributes to IEQ: <i>Low Emitting Materials</i> ; M&R: <i>EPD and EPR</i>
End of Life	Fully Recyclable LVT to Carpet Tile Backing

Packaging

Square Feet per Carton	26.91 sq. ft. (2.5 m ²)
Pieces per Carton	10
Weight per Carton	40 lbs (18 kg)
Cartons per Pallet	40
Pallets per Truckload	20

Technical Information

Installation	See Interface LVT Installation Guidelines online
Maintenance	See Interface LVT Maintenance Guidelines online
Reclamation	Recyclable through ReEntry® - Call 1.888.733.6873 (U.S.) / 1.866.398.3191 (Canada)
Warranty	15 Year Limited Commercial Warranty
Installation Methods	Ashlar, Herringbone



All product specifications reflect averages derived from product sample testing, are subject to normal manufacturing and testing tolerances and inherent pattern variances, and may be changed without notice. For more information about these and other important attributes of the product(s) described herein, including recycled content and product warranty information, please see our full LVT product disclaimer @ interface.com.

Studio Set Colorline



A00701 SILVERLIGHT



A00702 PEWTER



A00703 PEPPER



A00704 ESPRESSO



A00705 TITANIUM



A00706 MUSHROOM



A00707 LIME



A00708 IRIS



A00709 OCEAN



A00710 POPPY



A00711 MANDARIN



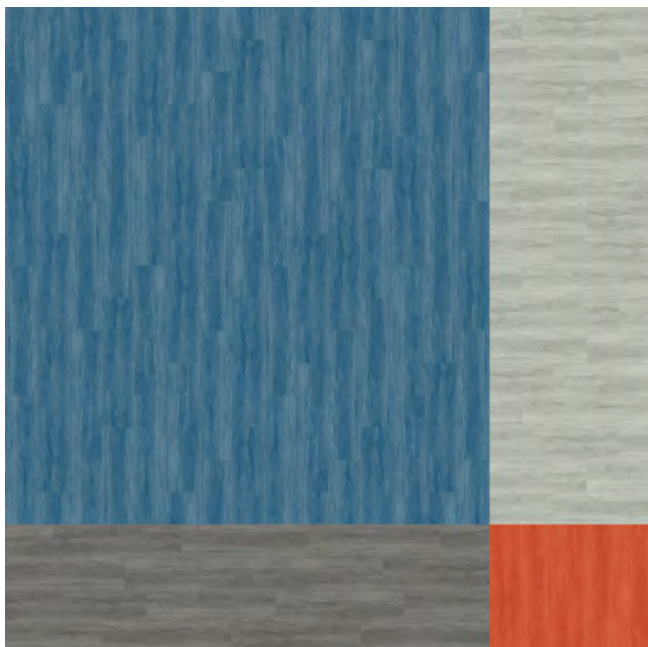
A00712 MARIGOLD



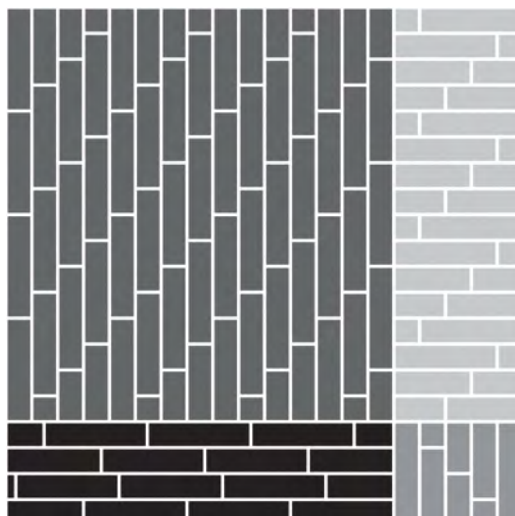
A00713 SLATE

Design Ideas

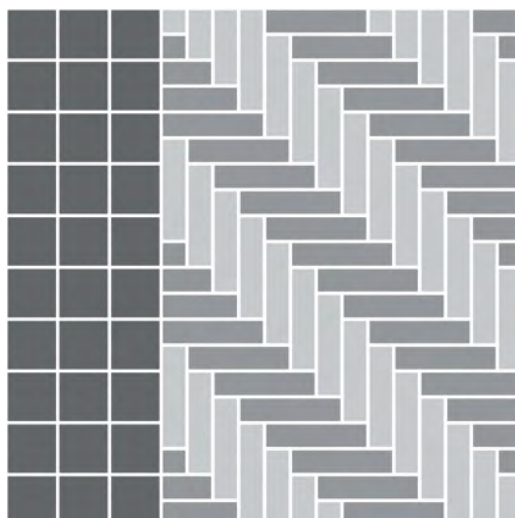
Below are floor layouts showing how to create the design ideas shared in several of the images featured in this brochure.



PRODUCT STUDIO SET **COLORS** A00701 SILVERLIGHT, A00702 PEWTER, A00709 OCEAN, A00711 MANDARIN **INSTALLED** PATTERN BY TILE (ASHLAR)

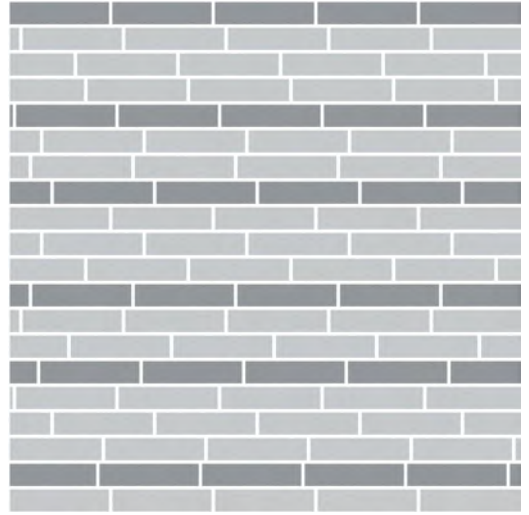


LVT PRODUCT STUDIO SET **COLORS** A00702 PEWTER, A00711 MANDARIN **INSTALLED** PATTERN BY TILE (HERRINGBONE) **CARPET PRODUCT** STEP REPEAT | SR799 **COLOR** 104935 GRANITE **INSTALLED** QUARTER-TURN

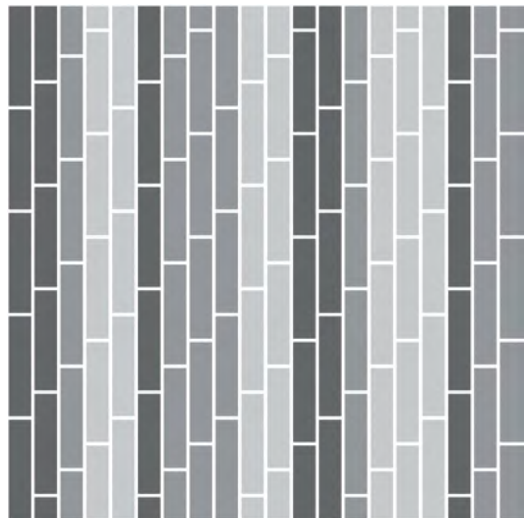




PRODUCT STUDIO SET **COLORS** A00702 PEWTER, A00713 SLATE
INSTALLED PATTERN BY TILE (ASHLAR)



PRODUCT STUDIO SET **COLORS** A00702 PEWTER,
A00709 OCEAN, A00711 MANDARIN **INSTALLED** PATTERN BY TILE (ASHLAR)



Design Ideas Below are floor layouts showing how to create the design ideas shared in several of the images featured in this brochure.



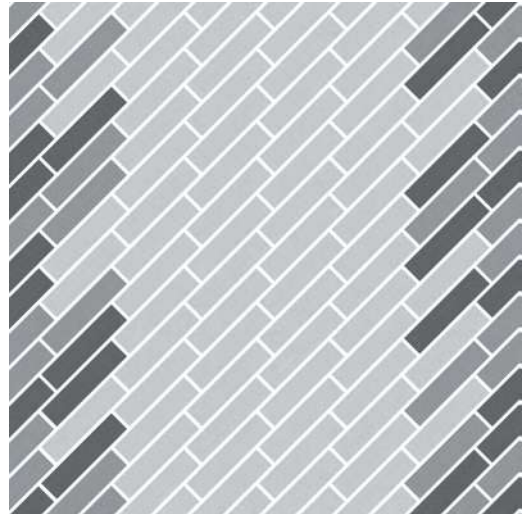
PRODUCT STUDIO SET **COLORS** A00703 PEPPER, A00702 PEWTER **INSTALLED** PATTERN BY TILE



PRODUCT STUDIO SET **COLORS** A00703 PEPPER, A00707 LIME, A00712 MARIGOLD, A00709 OCEAN **INSTALLED** PATTERN BY TILE (ASHLAR)



PRODUCT STUDIO SET **COLORS** A00704 ESPRESSO, A00705 TITANIUM, A00710 POPPY
INSTALLED PATTERN BY TILE (ASHLAR)



PRODUCT STUDIO SET **COLORS** A00701 SILVERLIGHT, A00702 PEWTER,
A00703 PEPPER, A00712 MARIGOLD **INSTALLED** PATTERN BY TILE



Install Interface Modular Resilient
LVT and Modular Carpet with our
TacTiles glue-free installation
system. No transition strip needed.



Integrated System.

Say goodbye to transition strips and doubling up. Our modular resilient floorings are made to work as a system with our modular carpet. The compatible size and height of our products allows you to integrate modular carpet for an inset rug or an adjacent field – no transition strip required. You'll avoid doubling up on materials and save money.

Glue-free Installation.

Create faster, cleaner and more flexible installations. Our TacTiles installation system eliminates the need for glue, adhering tiles securely together to form a flexible, "floating" floor. Unlike click or adhesive-based products, simply lift, remove and replace damaged or worn tiles. The result? Less mess, less waste and virtually zero VOCs, not to mention an environmental footprint that is over 90% lower than that of traditional glue adhesives.

Circular System.

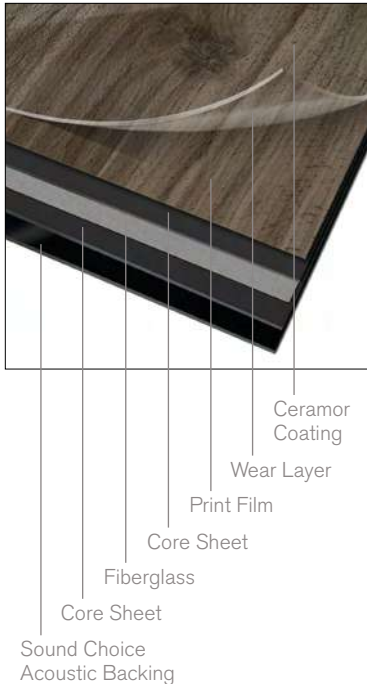
Keep flooring out of the landfill. Our modular resilient LVT is produced with a controlled material stream so it can be reclaimed and recycled into our GlasBac®RE recycled content backing through our ReEntry program.



Noise Reduction.

Silence distractions. Interface is helping create +Positive spaces with our LVT with Sound Choice™ backing. It's Quiet Mark™ certified for its superior noise reduction qualities, offering you best-in-class performance for reduced impact sound and floor to floor sound transmission.

Why Our Modular Resilient LVT? (continued)



High Performance from Top to Bottom.

From our Ceramor™ coating to our Sound Choice backing, we've designed our modular resilient LVT to provide peak performance in even the most challenging work environment while also providing superior noise reduction.

Abrasion Resistance. Our Ceramor ceramic bead coating provides a durable finish that resists scratching and scuffing so your floors look better longer. Embossing adds texture to further enhance durability.

A Strong Core. Incorporating a fiberglass layer between two core sheets provides optimal dimensional stability and flexibility, allowing for a glue-free installation and the ability to move and update with ease.

Third Party Certification.

Low Carbon Option. ALL Interface LVT sold in North America is third party verified carbon neutral under our long-standing Cool Floor™ program. Cool Floor offsets all greenhouse gas (GHG) emissions associated with the entire life cycle of the product.

Environmental Product Declaration (EPD). Interface LVT products are covered by an EPD. An EPD provides a comprehensive statement of product ingredients and environmental impacts based upon life cycle assessment performed to ISO standards.

Sustainable Assessment. Interface LVT meets the Silver level of the NSF/ANSI 332 Sustainability Assessment for Resilient Floor Coverings. This standard evaluates the environmental impact of resilient floorcovering for its entire lifecycle.

Indoor Air Quality. All Interface modular flooring products meet the highest standards for indoor air quality. Interface LVT is FloorScore® Certified, assuring very low emissions of VOCs.

cool floor™







PLEASE RECYCLE

Printed on 50% post consumer waste (PCW) fiber manufactured using wind power.

We have tried our very best to accurately represent product colors. However, due to the nature of printed materials, color of actual products may vary slightly. Please request a sample to see actual product color.

www.interface.com

United States Headquarters

1503 Orchard Hill Road
LaGrange, GA 30240
1.800.336.0225 ext.56511

Canadian Headquarters

233 Lahr Drive
Belleville, ON K8N 5S2
1.800.267.2149 ext.52128

Brazilian Headquarters

Rua Surubim, 577 - Conjuntos
73/74 7º Andar
04571-050 - São Paulo - SP
+ 55 11 2196 0900

Latin American Headquarters

Montes Urales # 415 Piso 6
Col. Lomas de Chapultepec
México City, D.F. 11000
Mexico
+ 52 55 6395 5100

CIM # IFS00793 12/2017



Mission Zero®

our promise to eliminate any negative impact our company may have on the environment by the year 2020.