



ARCHITECTURAL SOLUTION  
AT ITS BEST

## ABOUT ÓTIC PARTICIÓN



Our world today is transforming into an integrated global village. This development has lent the economy a strong bullish trend. It has also brought about a change in taste with regards to architecture and interior design. 'Minimalistic' design is currently quite in vogue.

A reflection of these changing trends is a desire for enhanced living and working spaces. People now demand a holistic design philosophy that delivers a comprehensive experience via architecture.

There has emerged a huge demand for alluring interiors sporting distinct elements. Thus, the use of glass as a structural element in interiors has become more frequent. This gives the design a contemporary edge. Today's architects are pushing the boundaries of creative design. Such a transformation is essential to meet the refined interests of today's Digital Age.

ÓTIC PARTICIÓN Systems is a much sought-after enterprise, well-known for its innovative use of glass. With this structural element, we intend provide look of distinct elegance to your homes or workspace. Glass serves an excellent design material. It combines several advantages. Not only it is easy to maintain, but it also permits natural light. It conserves precious energy, while exuding style difficult to achieve with any other element. To top it all, glass is one of the safest elements to use in architecture and interior design.



## ÓTIC PARTICIÓN & IT'S ACOUSTIC INNOVATION



Ótic Partición designs installs state-of-the-art partition systems and heavy duty pivot-hinged doors.

Most office spaces need screens that offer acoustic benefits and structural stability - especially cabins and conference rooms. Ótic Partición Aluminium Glass is the ideal solution for these requirements.





ÓTIC PARTICIÓN TAILORS EACH ARCHITECTURAL GLASS PARTITION  
TO YOUR EXACT SPECIFICATIONS AND STYLE.

WE OFFER A COMPREHENSIVE RANGE OF DESIGNS  
AND FINISHES TO CATER TO EACH CLIENT.



## SL 40 SINGLE-GLAZED ÓTIC PARTICIÓN



Our SL 40 Single-Glazed Partición offers unbeatable transparency and minimal hindrance. It is slim yet possesses the uncompromising ability to withstand a height of up to 3 metres. What's more, this system also delivers peerless sound insulation.



## SL 40 SINGLE-GLAZED PARTICIÓN SYSTEM

### SPECIFICATIONS:

Section Width - 40mm, Section Height - 25mm,

Thickness – 2.5mm

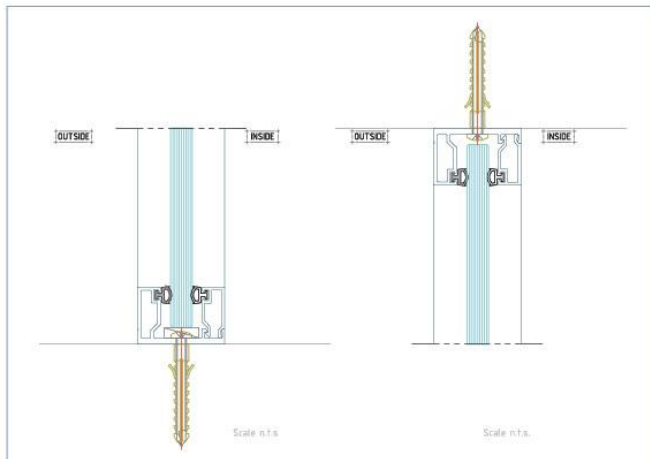
Gaskets - Silicon Based

Aluminum - T6 Grade Virgin Aluminum

Glass Connectors - Aluminum/Clear PVC with Norton

Double-sided Tape

### DETAILED DRAWING





## BL 100 SINGLE-GLAZED ÓTIC PARTICIÓN



Our BL 100 Ótic Partición accentuates the glass component & minimizes use of the aluminium frames to a modern look. This seamless design philosophy lends flexibility and individuality to your spaces.



## BL 100 SINGLE-GLAZED ÓTIC PARTICIÓN

### SPECIFICATIONS:

Section Width - 100mm, Section Height - 25mm,

Thickness - 2mm

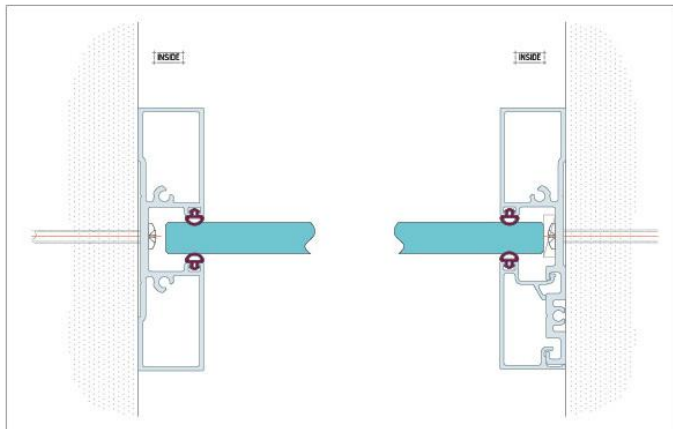
Gaskets - Silicon Based

Aluminum - T6 Grade Virgin Aluminum

Glass Connectors - Aluminum/Clear PVC with Norton

Double-sided Tape

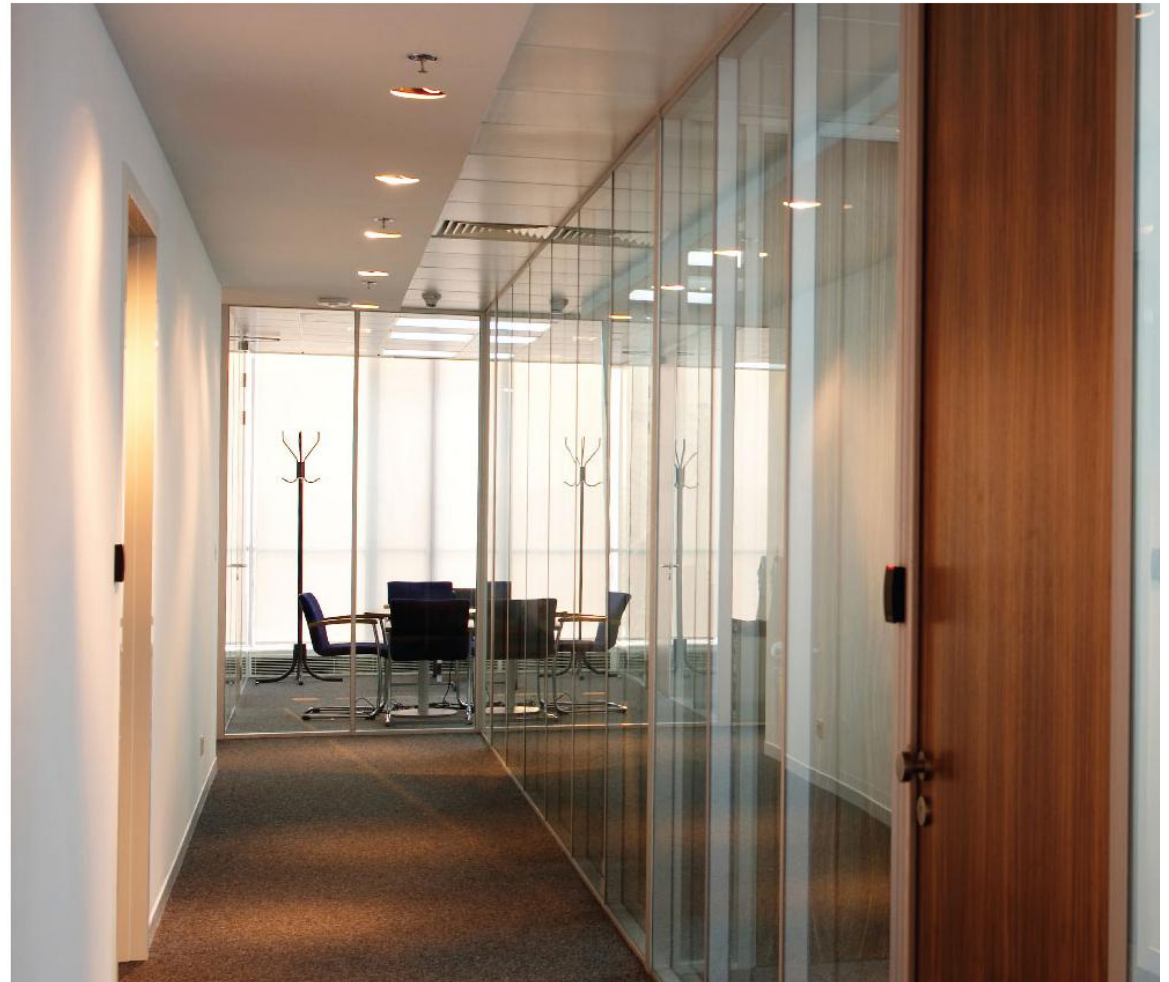
### DETAILED DRAWING





## DG 100 DOUBLE GLASS ÓTIC PARTICIÓN

The DG 100 Double Glass Ótic Partición is the alignment of two glass panels to make up a single module. It guarantees excellent acoustic benefits. The double-pane glass doors appear flush with the walls and come in a variety of finishes. There is also the possibility of inserting curtains, blinds, etc. between the two glass panels.



## DG 100 DOUBLE GLASS ÓTIC PARTICIÓN

### SPECIFICATIONS:

Section Width - 100mm, Section Height - 25mm,

Thickness - 2mm

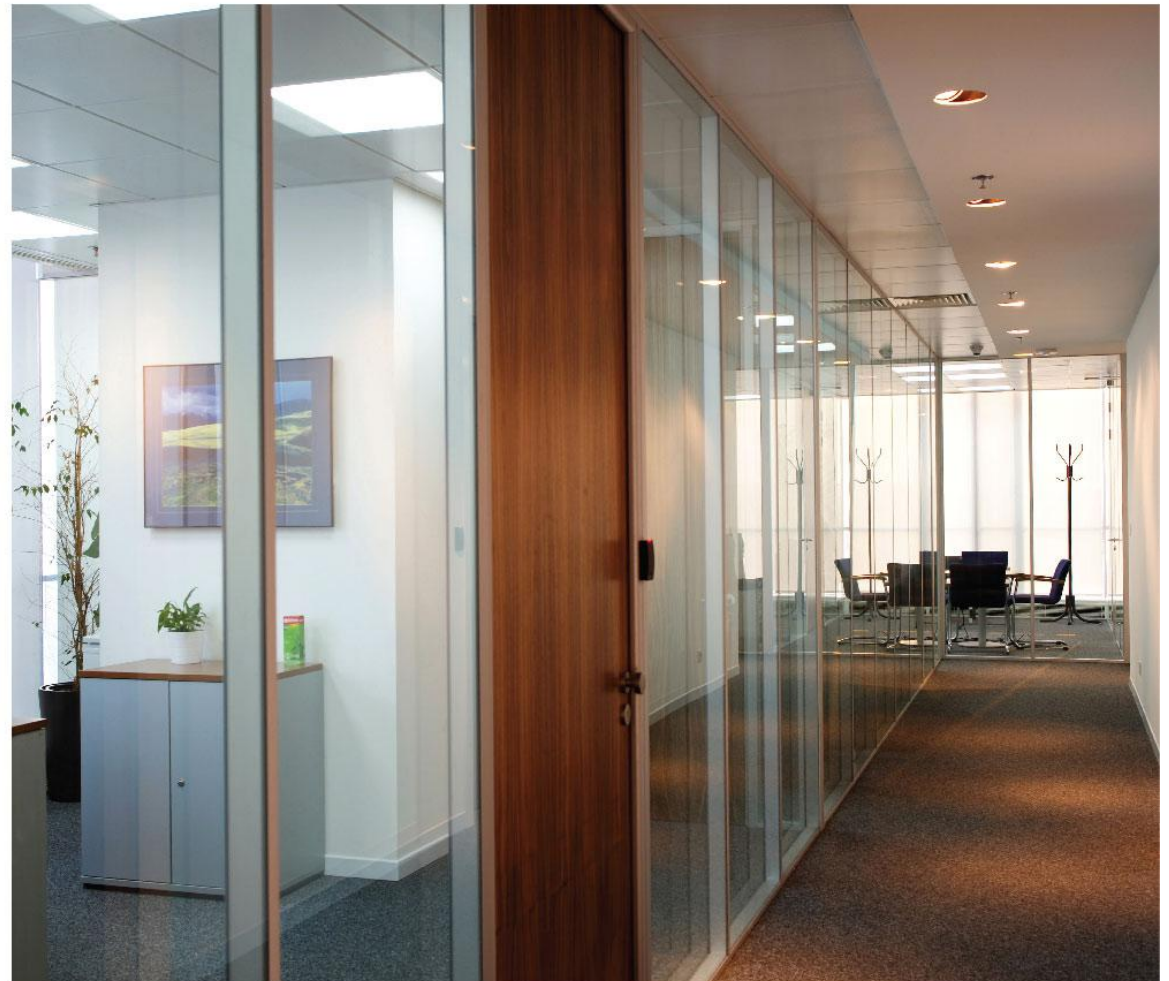
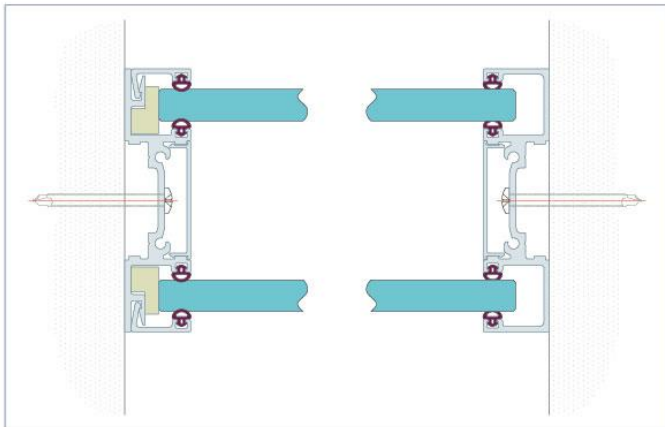
Gaskets - Silicon Based

Aluminum - T6 Grade Virgin Aluminum

Glass connectors - Aluminum/Clear PVC with Norton

Double-sided Tape

### DETAILED DRAWING



## ÓTIC PARTICIÓN DOOR SYSTEM



Ótic Partición Door Systems provide a range of door profiles for Slim Line, Broad Line and Double Glass options – each of which is distinct from the other offerings. In addition to junction profiles, Ótic Partición provide option that are ultra - stable and ridges of a consistent standard all throughout.





## ÓTIC PARTICIÓN DOOR SYSTEM



### SPECIFICATIONS:

Section Width - 55mm, Section Height - 40mm,

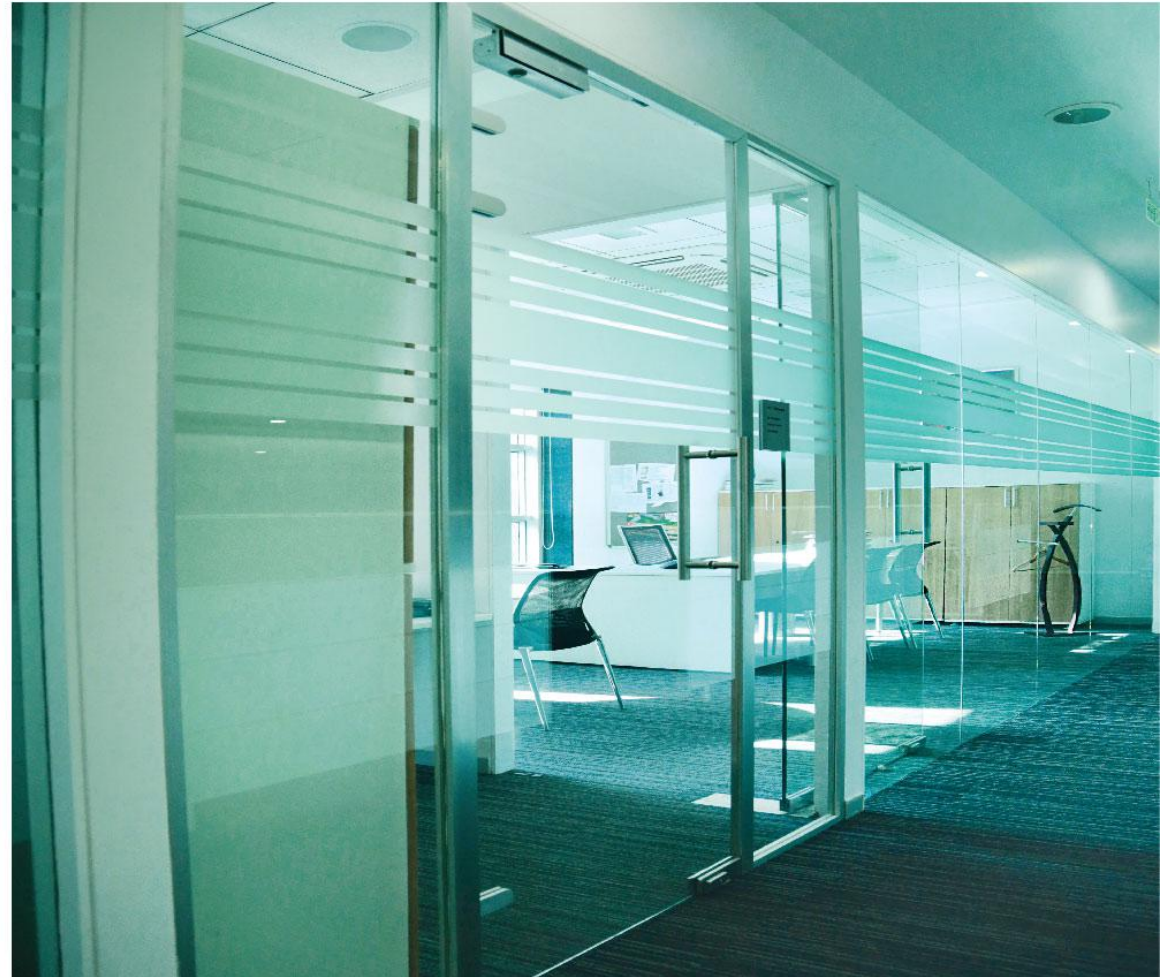
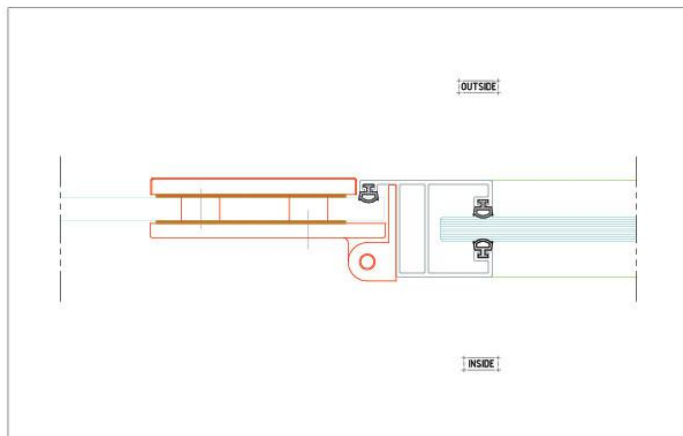
Thickness - 2mm

Gaskets - Silicon Based

Aluminum - T6 Grade Virgin Aluminum

Hardware- Glaskar Hinges, Door closer with saddle plate  
& other glass door hardware

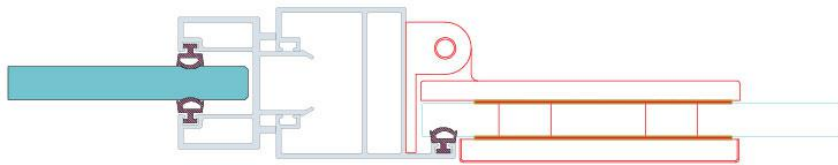
### DETAILED DRAWING



## DETAILED DRAWINGS

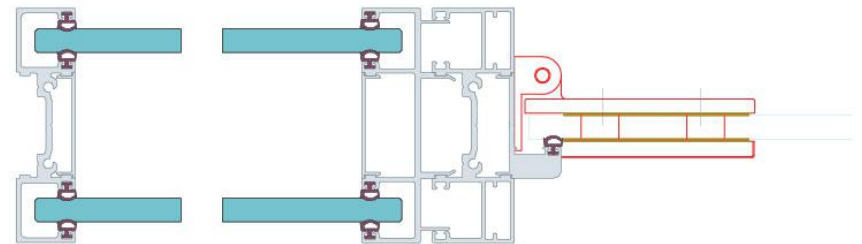
### SL 40 DOOR FIXING DETAIL

#### ■ Aluminum Glass Door



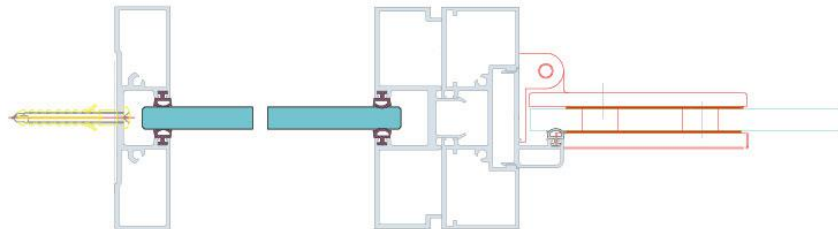
### DG 100 DOOR FIXING DETAIL

#### ■ Aluminum Glass Door



### BL 100 DOOR FIXING DETAIL

#### ■ Aluminum Glass Door



### TECHNICAL SPECIFICATIONS FOR PARTICIÓN SYSTEMS

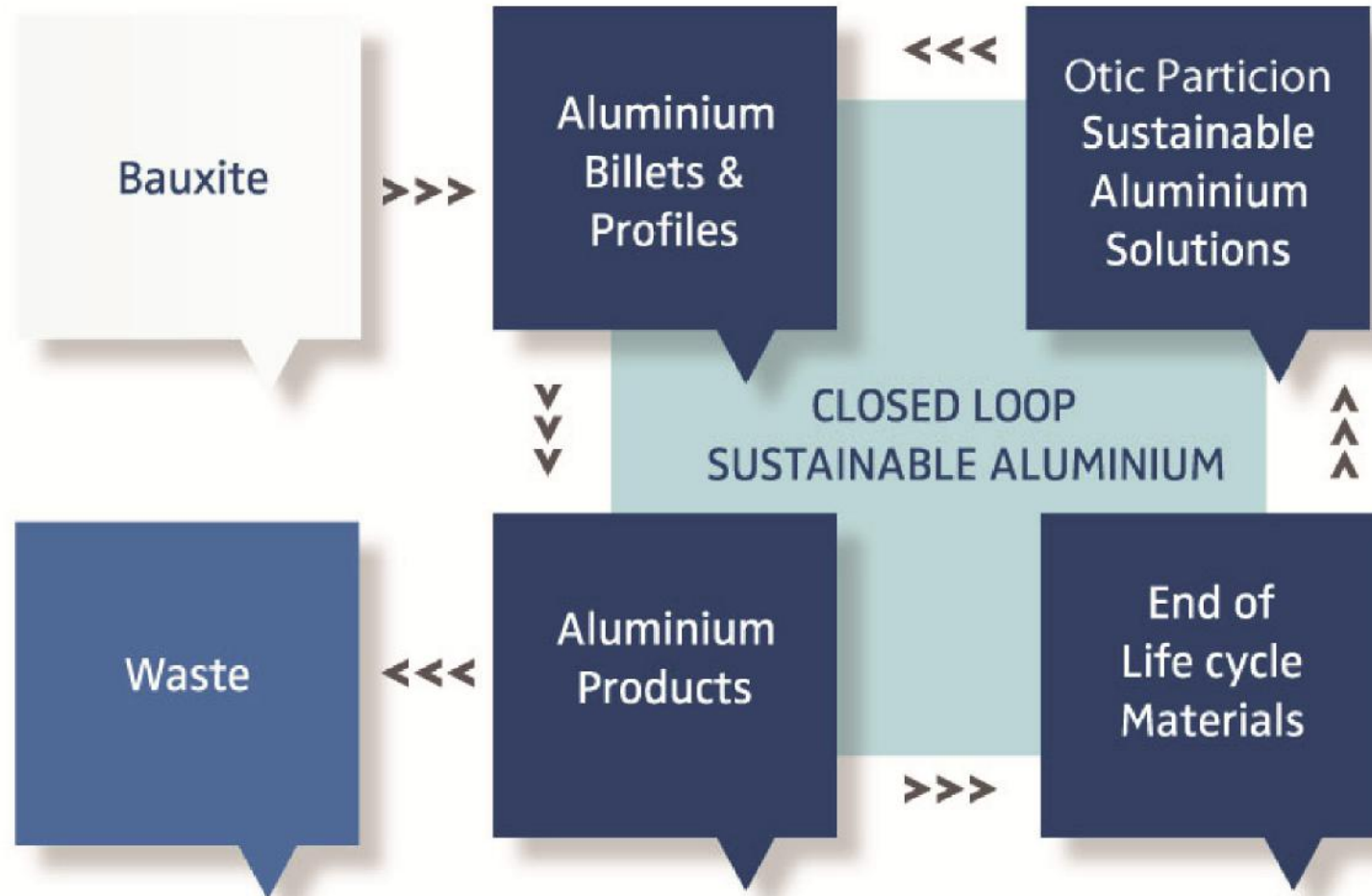
- Aluminium Alloy – 6063 T6
- Glass Thickness – 10mm/12mm Thick  
(laminated glass upto 12mm Thick Possible)
- Gaskets – Silicone Gaskets/TPE for better Acoustic benefits
- Glass to Glass Connector – Aluminium & PVC both options available
- Hardwares – Glaskar Hinges & Door Closure of brands like Assa Abloy, Geze & Dorma

## SUSTAINABILITY



- OTIC partition systems are comprised primarily of easily recyclable aluminum.
- This aluminum is made with 100 % virgin Aluminium.
- Aluminum used in OTIC System contain a high percentage of both post-consumer and post-industrial recycled content, at the end of its long, useful life in your building application it is 100% recyclable. Aluminum OTIC System components can be repeatedly recycled back into similar products with no loss of quality.
- The Aluminum contains: – 60% post-industrial press scrap
- Meets LEED requirements for recycled content specified by USGBC & IGBC





### INSIGHTS TO EXTRUDED ALUMINIUM ALLOYS

Alloy 6063 is an Al – Mg – Si alloy; it is one of the most popular alloys in the 6XXX series; its properties are:

- ☒ It has good extrudability and a high quality surface finish
- ☒ It has excellent corrosion resistance to atmospheric conditions including resistance to stress corrosion cracking
- ☒ It has very high electrical conductivity
- ☒ It can easily be welded and responds well to anodizing

Alloy 6063 is used in a variety of applications such as:

- ☒ In making door and window frames
- ☒ Electrical components and Conduit
- ☒ Pipe and Tube for various applications
- ☒ Architectural and Building products
- ☒ Railings and Furniture
- ☒ In manufacture of heat - sinks

At Otic Partición, alloy 6063 is used for producing profiles of standard architectural shapes, customized shapes and for producing profiles of very high surface quality. The profiles produced using alloy 6063 are suitable for many coating operations such as anodizing and powder coating.

Otic Partición offers profiles of alloy 6063 in a variety of standard tempers developed for unique applications. These are summarized as follows:

CHEMICAL ANALYSIS		
Elements	Percent Weight	
	Minimum	Maximum
Si	0.20	0.60
Fe	-	0.35
Cu	-	0.10
Mn	-	0.10
Mg	0.45	0.90
Cr	-	0.10
Zn	-	0.10
Ti	-	0.10
<b>Others Each</b>	-	0.05
<b>Others Total</b>	-	0.15
<b>Aluminium</b>	Remainder	

Note: Chemical Analysis details as per standard BS EN 573-3:2009

#### TEMPER DESIGNATIONS & DEFINITIONS OF ALLOY 6063

Standard Tempers Definitions*	
F	Extruded profile is not subjected to any kind of heat treatment, it is just air cooled
O	Extruded profile is softened, annealed at 350 – 500 °C for 1 – 5 hrs, in order to obtain the lowest strength temper
T1	Extruded profile is cooled from an elevated temperature and naturally aged
T4	Extruded profile is and naturally aged at 20°C to a stable condition
T5, T52, T53	Extruded profile is cooled from extrusion temperature and artificially aged, typically 160 -190°C, for 4 – 10 hrs
T6	Extruded profile is solution heat - treated and artificially aged

RESPONSE OF TEMPERS TO OTHER APPLICATIONS		
Characteristics	Ratings	Tempers
Resistance to Corrosion (GEN)	A	T1, T4, T5, T52, T53, T6
Workability	B	T1, T4, T5
	C	T6
Machinability	D	T1, T4
	C	T5, T52, T6
Brazeability	A	T1, T4, T5, T6
Anodizing †	A	T1, T4, T5, T6

PHYSICAL PROPERTIES	
Quantity	Value
Solidus Temperature (°C)	615
Liquidus Temperature (°C)	655
Density (Kg <sup>m</sup> - <sup>3</sup> )	2685
Melting Point (°C)	630
Co-efficient of thermal expansion (µm <sup>m</sup> - <sup>1</sup> K <sup>-1</sup> )	25.6
Thermal Conductivity(Wm <sup>-1</sup> K <sup>-1</sup> )	209
Specific Heat Capacity (Jkg <sup>-1</sup> K <sup>-1</sup> )	900
Electrical Resistivity (nΩm)	32

Note: Ratings A to D are in decreasing order of merit, A – Excellent, B – Good, C – Fair, D – Poor †Type II anodizing is done  
 Note: Physical properties have been taken at a temperature of 20 °C

# TEST CERTIFICATIONS – BL 100 Single Glass

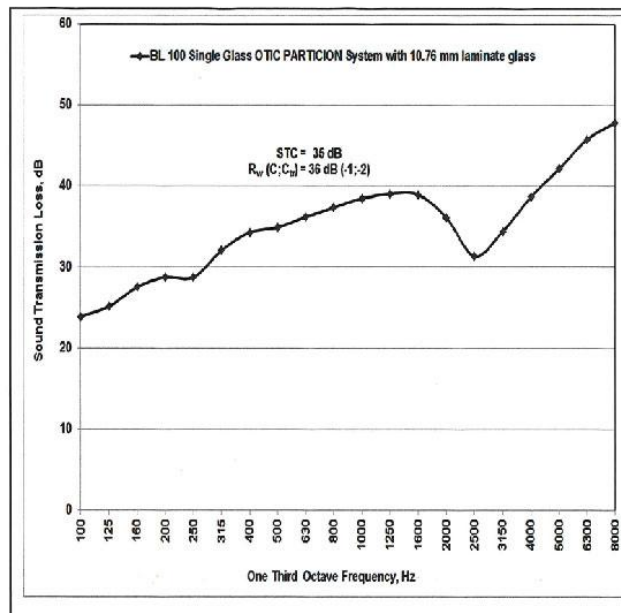


No. NVH/7726/2016-17/590 (V-4)-1

19<sup>th</sup> December 2016

Table 1 and Figure 2: Values and plot for Sound Transmission Loss of BL 100 Single Glass OTIC PARTICION System with 10.76 mm laminate glass at one third octave frequencies

One Third Octave Frequency, Hz	Sound Transmission Loss, dB	Standard deviation, dB
100	23.9	0.1
125	25.1	0.1
160	27.5	0.2
200	28.7	0.1
250	28.7	0.3
315	32.1	0.1
400	34.3	0.1
500	34.9	0.1
630	36.2	0.0
800	37.4	0.1
1000	38.5	0.2
1250	39.1	0.0
1600	39.0	0.1
2000	36.2	0.1
2500	31.3	0.0
3150	34.4	0.0
4000	38.7	0.2
5000	42.2	0.1
6300	45.8	0.2
8000	47.9	0.1
<b>STC</b>	<b>35</b>	
<b>R<sub>w</sub> (C; C<sub>tr</sub>)</b>	<b>36(-1; -2)</b>	



The Measurement Uncertainty in sound transmission loss evaluation is ± 3 dB from 125 Hz to 630 Hz and ± 1.5 dB above 630 Hz with 95.45 % confidence level and K= 2. The measurement uncertainty has been computed at one third octave frequency band from 125 Hz to 8000 Hz



# TEST CERTIFICATIONS – DG 100 Double Glass

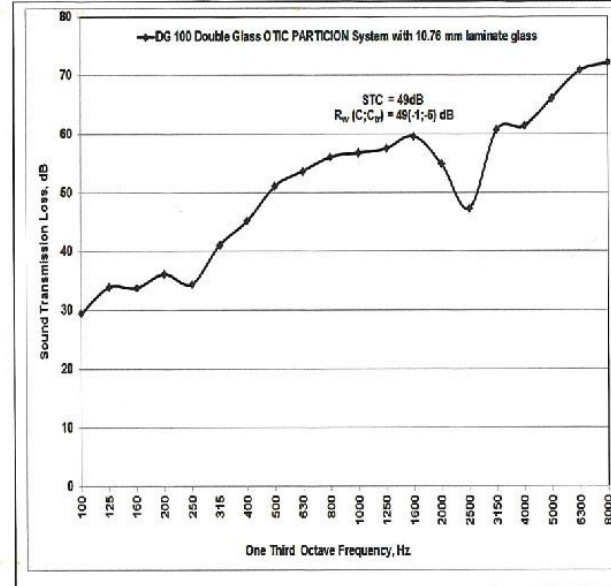


No. NVH/7726/2016-17/590 (V-4)-2

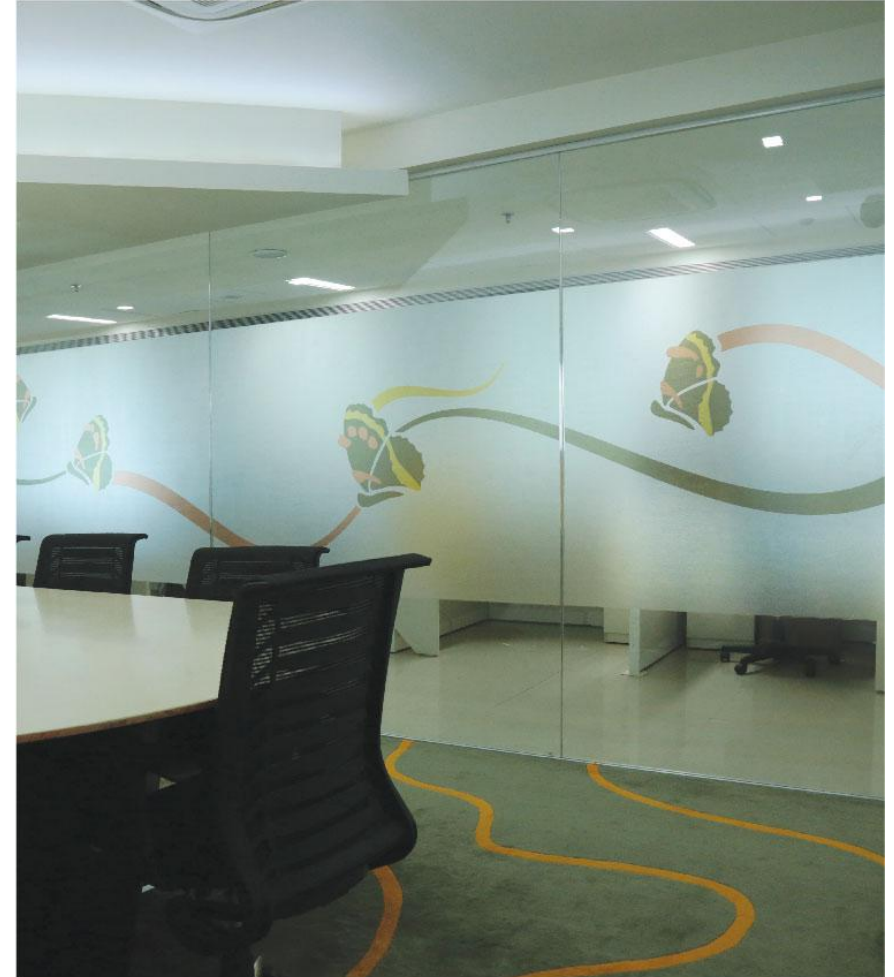
19<sup>th</sup> December 2016

**Table 1 and Figure 2: Values and plot for Sound Transmission Loss of DG 100 Double Glass OTIC PARTICION System with 10.76 mm laminate glass at one third octave frequencies**

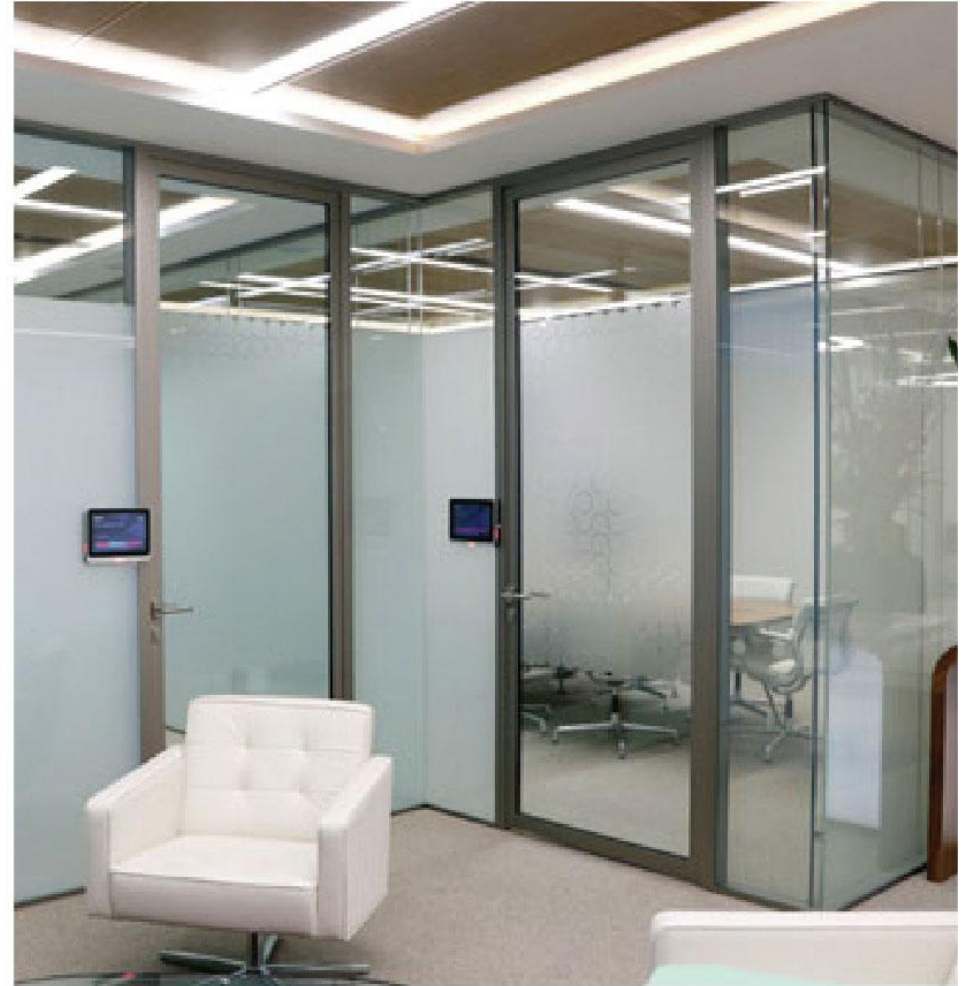
One Third Octave Frequency, Hz	Sound Transmission Loss, dB	Standard deviation, dB
100	29.5	0.1
125	33.9	0.1
160	33.7	0.2
200	36.1	0.1
250	34.4	0.3
315	41.0	0.1
400	45.2	0.2
500	51.1	0.1
630	53.7	0.0
800	56.1	0.1
1000	56.8	0.2
1250	57.5	0.0
1600	59.6	0.1
2000	54.8	0.1
2500	47.2	0.1
3150	60.6	0.1
4000	61.4	0.2
5000	66.1	0.1
6300	70.8	0.2
8000	72.1	0.1
<b>STC</b>	49	-
<b>R<sub>w</sub> (C; C<sub>tr</sub>)</b>	49(-1; -6)	-



The Measurement Uncertainty in sound transmission loss evaluation is ± 3 dB from 125 Hz to 630 Hz and ± 1.5 dB above 630 Hz with 95.45 % confidence level and K= 2. The measurement uncertainty has been computed at one third octave frequency band from 125 Hz to 8000 Hz





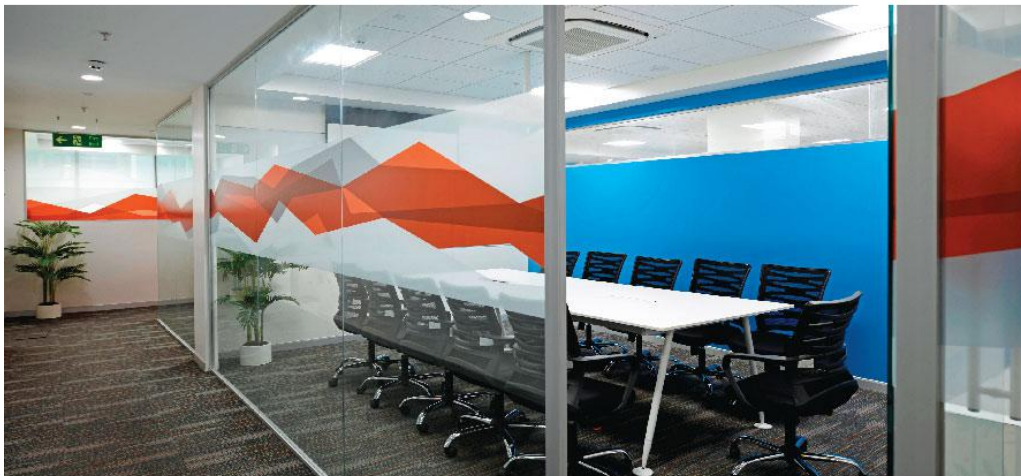
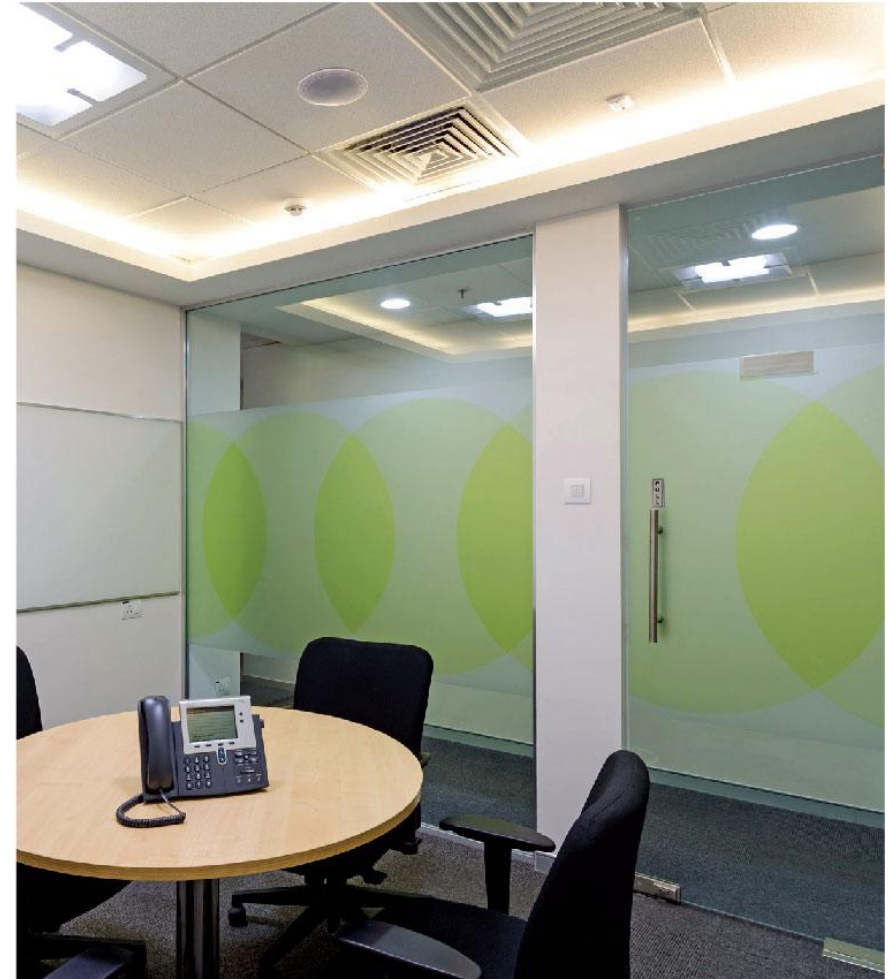
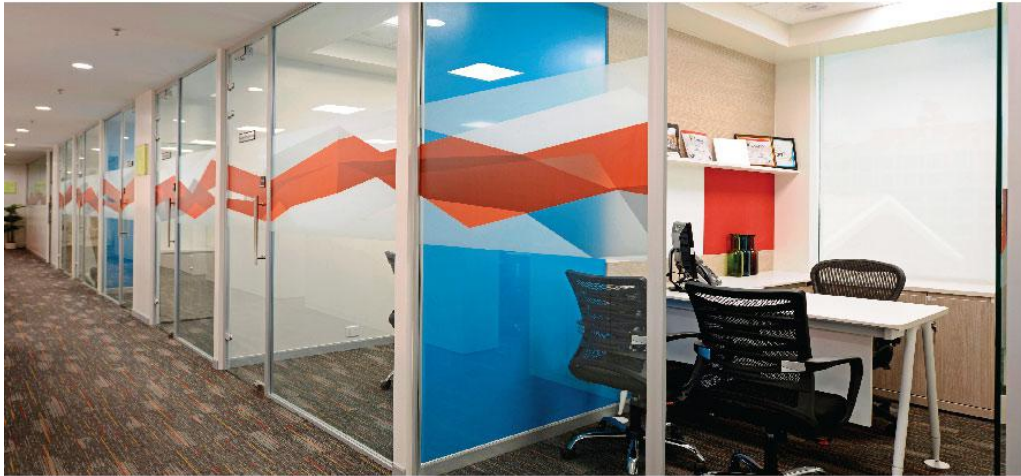




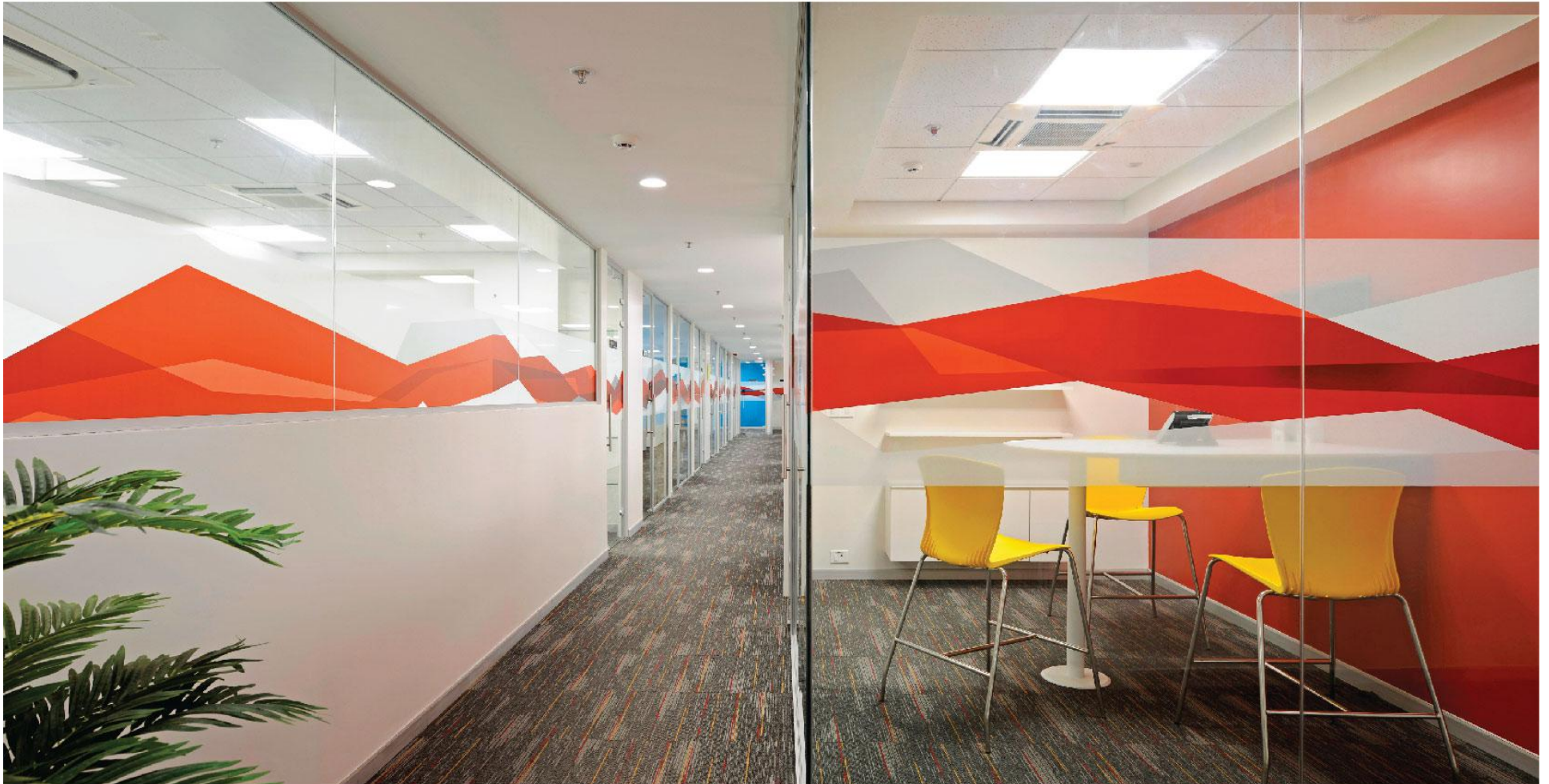












## LIST OF PROJECTS



- IPCA Pharmaceuticals** : Kandivali - Terrawits Inc
- Mahindra Lifespaces** : Kandivli
- Roche Pharma I** : Andheri - DWP Interics
- Roche Pharma II** : Bandra Kurla Complex - DWP Interics
- Godrej** : Bandra Kurla Complex
- Brenan IT Park** : Mhape
- GE-SBI** : Pune (Viman Nagar) - Beyond Design
- CII** : Worli
- Mr. Gomes Office** : Worli
- Word line** : Andheri - Arch Anil Salian
- Capricorn Logistics** : Andheri) - Arch R A Design
- Volkswagen** : Andheri
- VAM Infra** : Govandi
- General Electric** : Hyderabad
- Ortho Diagnostic Center** : Andheri - Beyond Design
- Kirloskar Oil & Gas Corporation** : Ensemble
- Red Bull Phase 1 & 2** : DCH Architects
- Keva Construction**
- Comflex**
- Saint Gobain - Beyond Design**



## PROJECT GALLERY





# Thank You



G-08, Suyog Industrial Estate Premises Co-Op Soc Ltd,  
LBS Marg, Vikhroli (W), Mumbai-83. India.

T : +91 22 4015 8360

+91 22 4215 1822

[www.oticparticion.com](http://www.oticparticion.com)